



Review Article

The International System for Reporting Serous Fluid Cytopathology—An Updated Review



Minhua Wang^{1*}, Ashish Chandra² and Guoping Cai¹

¹Department of Pathology, Yale School of Medicine, New Haven, CT, USA; ²Department of Cellular Pathology, Guy's and St Thomas' NHS Foundation Trust, London, UK

Received: August 17, 2023 | Revised: October 29, 2023 | Accepted: November 20, 2023 | Published online: December 20, 2023

Abstract

The International System (TIS) for reporting serous fluid cytopathology was published in December 2020 as a joint project by the International Academy of Cytology and the American Society of Cytopathology. The purpose was to standardize the diagnostic criteria and nomenclature used in reporting serous fluid samples, thereby improving the reproducibility of reports and improving communication between pathologists and clinicians. TIS defines a five-tier system consisting of nondiagnostic, negative for malignancy, atypia of uncertain significance, suspicious for malignancy and malignant categories. This review provides an updated summary of the reporting system, risk of malignancy, potential diagnostic pitfalls, and a practical diagnostic approach to serous fluid specimens.

Citation of this article: Wang M, Chandra A, Cai G. The International System for Reporting Serous Fluid Cytopathology—An Updated Review. *J Clin Transl Pathol* 2023. doi: 10.14218/JCTP.2023.00025.

Introduction

Serous effusion is defined as an excessive accumulation of fluid in a body cavity, which includes the pleural, pericardial, and peritoneal spaces.¹ Cytological evaluation of serous fluid is useful for detecting underlying etiologies, such as malignancy, and evaluating tumor stage, as well as providing information for treatment customization.^{2,3} To standardize the diagnostic criteria and nomenclature used in fluid cytology reporting, The International System (TIS) for reporting serous fluid cytopathology was proposed by the International Academy of Cytology and the American Society of Cytopathology.^{4,5} The purposes of such a standardized reporting

system are to improve the reproducibility of cytopathology reports, improve the communication between pathologists and clinicians, and provide guidance for patient management. TIS defines a five-tier category system consisting of nondiagnostic (ND), negative for malignancy (NFM), atypia of uncertain significance (AUS), suspicious for malignancy (SFM), and malignant (MAL) categories. The diagnostic criteria for each category are summarized in [Table 1](#).⁶

ND

Definition

A specimen is considered ND if it provides no diagnostic information in the appropriate clinical context, as in the case of acellular, highly degenerated, or hemorrhagic samples.⁶ The sample is deemed unsatisfactory for evaluation owing to insufficient cellularity with no cells or rare benign-appearing cells (fewer than 10 cells), such as lymphocytes, macrophages, or red blood cells. This diagnostic category should only be used after an adequate and representative amount of fluid has been processed and examined.⁶

Adequacy assessment

The adequacy of a specimen depends on several factors, including the volume and cellularity of the sample. Furthermore, degenerated cells, generalized hemolysis, and poorly preserved cells should be considered ND instead of interpreted as AUS. A minimum volume of at least 75–100 mL is recommended for optimal results in detecting malignancy.⁷ However, smaller volumes should not be rejected as they may contain adequate cellularity and cells of interest. A comment about cellularity should be stated for specimens with low cellularity. Mesothelial cells are not required for specimen adequacy.⁸ Specimens with no mesothelial cells can still be considered satisfactory for evaluation as long as the specimens are compatible with clinical settings. Situations such as tuberculosis and chylous effusion can result in lymphocyte-only specimens. Likewise, a sample taken from an acute infection with a neutrophil-predominant effusion can be considered adequate even without mesothelial cells. Blood-only specimens are mostly considered ND; however, it can be categorized as NFM in an appropriate clinical setting, such as tamponade, which can contribute to a blood-only pericardial fluid.⁸ On the other hand, specimens with adequate volume and cellularity can still be considered ND if the specimens demonstrate extensive degenerative changes.

Keywords: Serous fluid; International reporting system; Cytopathology; Risk of malignancy.

Abbreviations: AUS, atypia of uncertain significance; BAP1, BRCA1-associated protein; CDKN2A, cyclin-dependent kinase inhibitor 2A; EMA, epithelial membrane antigen; MAL, malignant; MIS, Mesothelioma in situ; MTAP, methylthioadenosine phosphorylase; ND, nondiagnostic; NFM, negative for malignancy; ROM, risk of malignancy; SFM, suspicious for malignancy; TIS, The International System.

***Correspondence to:** Minhua Wang, Department of Pathology, Yale School of Medicine, 20 York Street, CB506, New Haven, CT 06510, USA. ORCID: <https://orcid.org/0000-0002-2283-7050>. Tel: +1 (203) 737-5445, Fax: +1 (203) 785-3255, E-mail: minhua.wang@yale.edu

Table 1. Diagnostic categories of TIS for reporting serous effusion cytopathology⁶

Diagnostic categories and definitions	
I. Nondiagnostic (ND)	Specimens with insufficient cellular elements for a cytologic interpretation
II. Negative for malignancy (NFM)	Specimens with cellular changes completely lacking evidence of mesothelial or nonmesothelial malignancy
III. Atypia of undetermined significance (AUS)	Specimens showing limited cellular (nuclear) and/or architectural atypia (e.g., papillary clusters or pseudoglandular formations)
IV. Suspicious for malignancy (SFM)	Specimens showing features suspicious but not definitively diagnostic for malignancy
V. Malignant (MAL)	Specimens include those with definitive findings and/or supportive studies indicating mesothelial or nonmesothelial malignancies

AUS, Atypia of undetermined significance; MAL, Malignant; ND, Nondiagnostic; NFM, Negative for malignancy; SFM, Suspicious for malignancy.

Risk of malignancy (ROM) and clinical management

The reported ROM for this category has varied from 0 to 100%, with a mean ROM of $17 \pm 8.9\%$ as reported by a recent meta-analysis.^{6,9} An effusion with a ND result should be re-aspirated if clinically indicated.¹⁰

NFM

Definition

The specimen with a benign diagnosis shows no evidence of malignancy in the appropriate clinical setting.⁶ A serous effusion specimen obtained from peritoneal, pleural, or pericardial cavities may be considered NFM when the specimen is composed of only benign or reactive cellular components, without MAL tumor cells or cells concerning for malignancy.⁶

Diagnostic considerations and pitfalls

By definition, these samples are adequate for evaluation although the specimens may be paucicellular. However, the scant material may not be adequately representative of the underlying lesion and therefore could potentially result in a failure to detect an existing malignancy. In our practice, if there is no suspicion for malignancy based on cytomorphologic analysis, we usually do not perform immunohistochemistry. However, if the patients have a history of malignancy or are clinically suspicious for malignancy, we do recommend performing immunohistochemistry with a panel of two epithelial and two mesothelial markers. NFM will be rendered if epithelial markers are negative. If positivity of epithelial markers is detected, additional immunostains are performed to elucidate the origin of the tumor. In cases with low cellularity, an indeterminate diagnosis including AUS or SFM is likely to be reported with a recommendation for repeat sampling for a definite diagnosis.

ROM and clinical management

The recent meta-analysis has reported that the ROM of the NFM category ranges from 0–82% with a mean ROM of 21%.^{6,9} Overall, serous effusion cytology has excellent diagnostic performance with a sensitivity of 73.1%, specificity of 99.9%, a positive likelihood ratio of 2112.2, and a negative likelihood ratio of 0.27.⁹ Patients with a NFM diagnosis are generally followed-up clinically.¹⁰

AUS

Definition

The AUS diagnostic category is reserved for effusion specimens that lack quantitative or qualitative cytological features to be confidently diagnosed as either benign or MAL and exhibit sufficiently clear morphologic features to exclude the possibility of classifying them as ND.⁶ Atypical cells may include atypical cells of undetermined origin, atypical mesothelial cells, or atypical lymphoid cells, with cytological features indefinite for a diagnosis of SFM.⁶

Diagnostic pitfalls

AUS should be a diagnosis of exclusion and its rate kept as low as possible in order to increase clinicians' confidence in cytologic reports. The atypical cells in this category cannot be confidently ruled out as MAL, but while they show morphological features overlapping with reactive changes, they are more likely to be only reactive changes. One of the common reasons for this uncertainty is that there is not sufficient material for further work-up.¹¹ Another common reason is the focal positivity of epithelial markers in atypical cells.

According to TIS, atypical cells include atypical epithelial cells, atypical mesothelial cells, and atypical lymphoid cells.

ROM and clinical management

The meta-analysis study has reported an estimated ROM of AUS of $66 \pm 10.6\%$.^{6,9} The management of AUS interpretation needs clinical correlation. If the patient does not have a history of malignancy or if fluid does not reaccumulate, in most cases follow-up is appropriate. Repeat sampling for further evaluation is recommended if the patients have a history of malignancy or fluid reaccumulates.¹⁰

SFM

Definition

The SFM category is defined as one in which the evidence falls short of confirming malignancy based on cytomorphology and results of any ancillary tests performed.⁶

Diagnostic considerations and pitfalls

Compared with AUS, cases with a SFM diagnosis are more

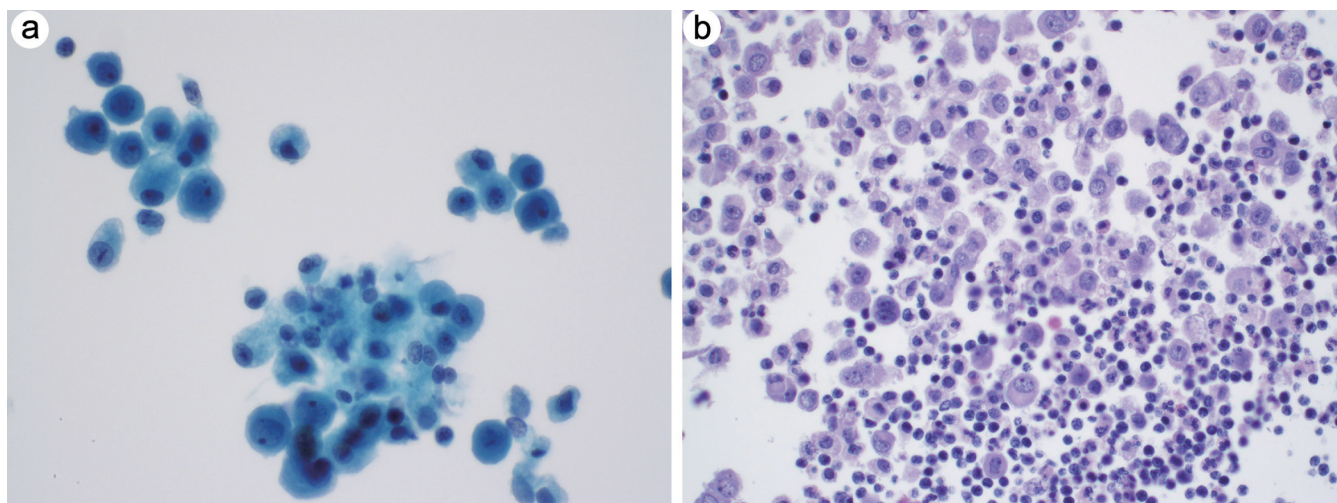


Fig. 1. Reactive mesothelial cells, histiocytes, and small lymphocytes. (a) ThinPrep, 600×. (b) Hematoxylin and eosin stain, 400×.

likely to be MAL.¹² Abnormal cells in an SFM diagnosis have notable cytological atypia and are morphologically suspicious for malignancy. These cells are classified as SFM rather than MAL for the following reasons: (1) There is no cell block for further work-up; (2) Immunohistochemistry may be noncontributory due to the cells of interest not appearing on the levels used for immunostaining; (3) There is focal positivity of epithelial markers, but the nonspecific staining of the epithelial cells in histiocytes and mesothelial cells cannot be ruled out; or (4) Suspicious cells are sparse and admixed with mesothelial cells and histiocytes, and although these cells might be highlighted by epithelial markers, they are rarely identified in hematoxylin and eosin sections.

ROM and clinical management

The meta-analysis study has reported the ROM of SFM as $82 \pm 4.8\%$.^{6,9} SFM has a high ROM, which supports more aggressive management for patients diagnosed with SFM. In the appropriate clinical setting, cases with SFM may be managed similarly to MAL cases.¹²⁻¹⁴

MAL

Definition

Cases categorized as MAL are defined as effusion specimens that present cells showing cytomorphological features, either alone or in combination with ancillary studies, diagnostic of malignancy.⁶ This category includes primary malignancies and secondary malignancies. Malignant mesothelioma is a primary malignancy originating from mesothelial cells, accounting for 1–6% of malignant effusion cases.¹⁵ A majority of malignant effusions are metastatic carcinoma to the pleura, most commonly from the lung and breast. Other secondary malignancies include melanoma, sarcoma, and lymphoma.^{15,16}

Diagnostic considerations and pitfalls

Mesothelial cells vs. metastatic carcinoma: Mesothelial cells, histiocytes, and small lymphocytes are normal elements in fluid specimens (Fig. 1). In daily practice, differentiating reactive mesothelial cells from malignant components is commonly encountered. To distinguish metastatic carcinoma from reactive mesothelial cells, the

first step is to assess if there are a second population of cells, i.e. the alien epithelial component, in the effusion specimen. Metastatic carcinoma can form tightly packed clusters with a smooth border or are individually distributed. The challenge is that reactive mesothelial cells with cytologic atypia can form clusters even with a papillary architecture, morphologically mimicking epithelial clusters. Additionally, dispersed individual carcinoma cells may mimic reactive mesothelial cells, subsequently producing a picture of a single population of cells (Fig. 2).

For these reasons, an immunopanel of at least two epithelial markers and two mesothelial markers are recommended to differentiate metastatic epithelial cells from mesothelial cells in effusion specimens. Mesothelial markers include calretinin, WT-1, D2-40, CK5/6, HBME-1, and thrombomodulin.¹⁷⁻¹⁹ Epithelial markers include claudin-4, MOC31, Ber-Ep4, BG-8, B72.3, CD15 (LeuM1) and CEA.^{17,19,20} Focal reactivity of epithelial markers, such as MOC31 and Ber-Ep4 can be found in reactive mesothelial cells as well as in up to 35% of mesotheliomas (Fig. 3).²¹ Recent studies show that claudin-4 can be used as a single marker in effusion as it is highly sensitive for metastatic carcinoma and completely negative in mesothelial cell origin (Fig. 3).²¹⁻²⁴ A panel of claudin-4 and Ber-EP4 yields the highest combined sensitivity and specificity.²² HEG1 also holds good potential as a marker for mesothelial differentiation because it is reported to be highly sensitive for mesothelial cells but negative for carcinoma cells.²⁵

Tumor origin of secondary malignancy in effusions

Once the malignant component is identified, the next step is to identify the tumor origin of the metastatic carcinoma. Depending on the patient's sex, age, and malignancy history, organ-specific markers can be included in the diagnostic panel. If the patient has a documented history of malignancy, the cytomorphology of the tumor cells is typical of the particular tumor type, direct application of organ-specific markers would be a reasonable approach. Otherwise, an approach to initially narrow down possible tumor origins by examining the expression patterns of cytokeratin, CK7, and CK20 followed by organ-specific markers might be considered. The algorithm is summarized in Figure 4. Organ-specific markers are summarized below.

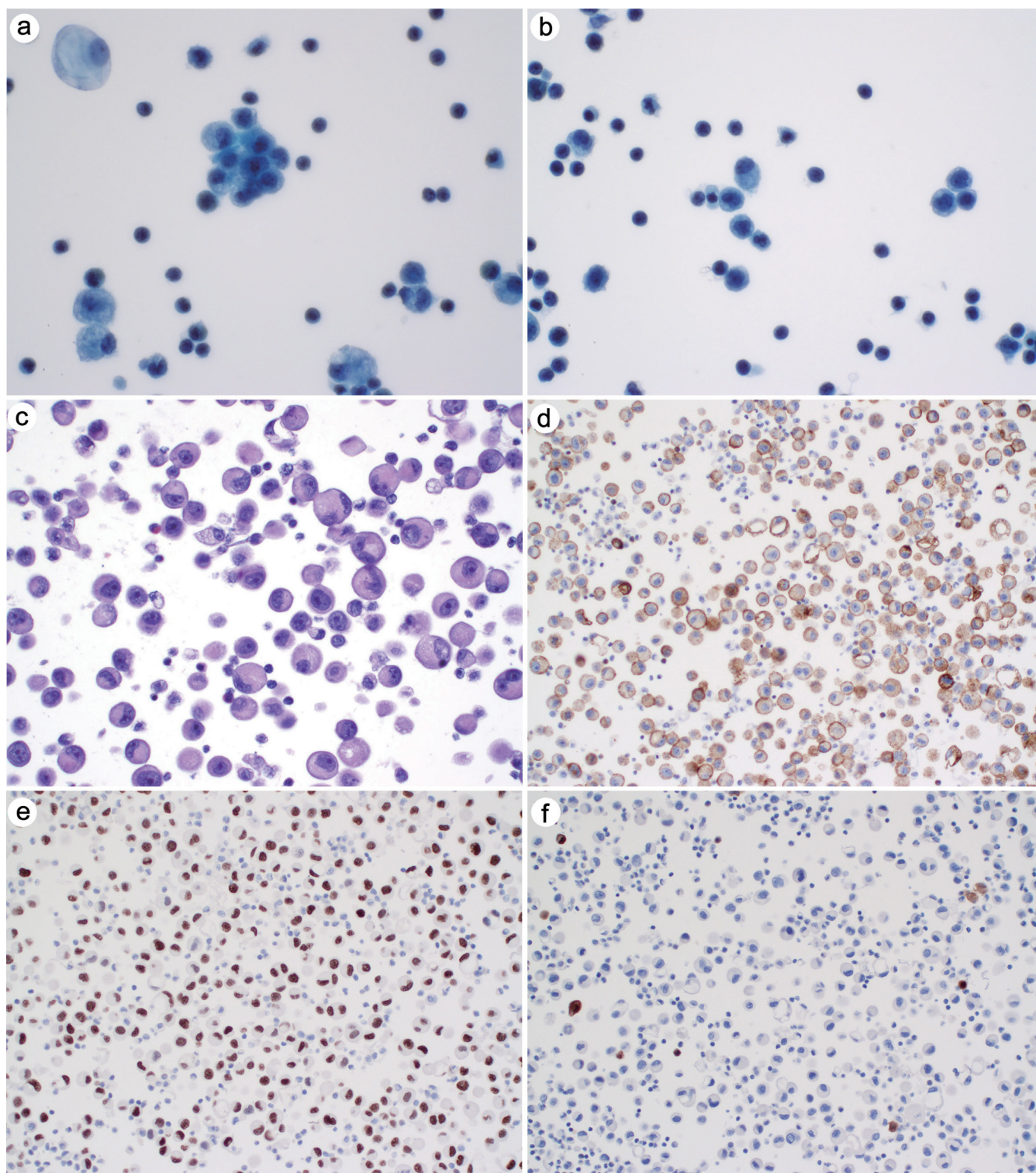


Fig. 2. Metastatic lung adenocarcinoma in pleural fluid. Tumor cells show individual distribution or form loosely cohesive clusters, mimicking mesothelial cells or histiocytes. (a–b) ThinPrep, 600 \times . (c) Hematoxylin and eosin stain, 400 \times . (d–f) Tumor cells are positive for Ber-Ep4 (d) and TTF1 (e) but negative for calretinin (f); all, 200 \times .

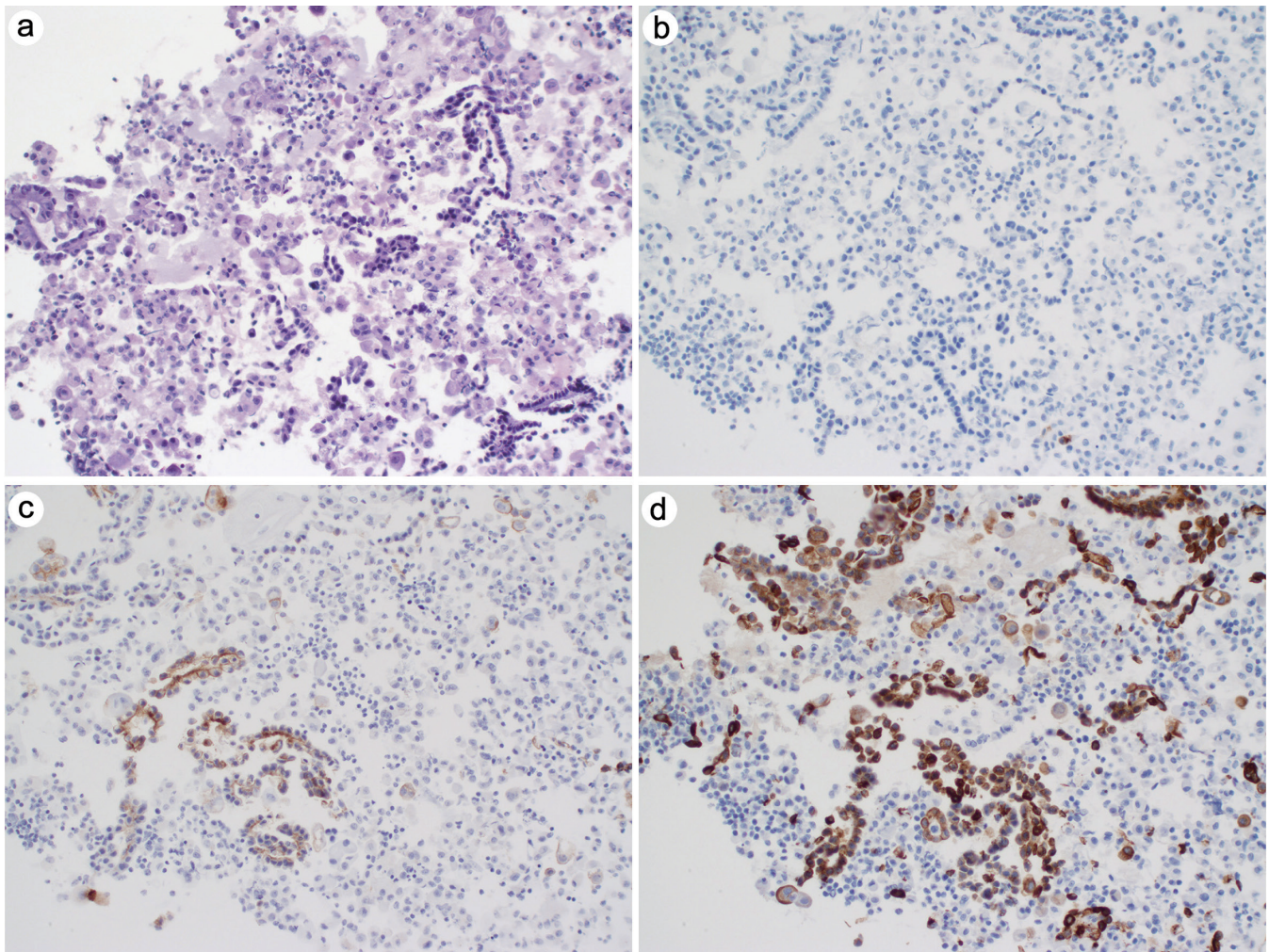


Fig. 3. Cells with BerEp4 positivity may be reactive mesothelial cells. (a) Mesothelial cells in pericardial fluid show reactive changes, 200 \times . (b) Claudin-4 is negative in mesothelial cells, 200 \times . (c) Ber-Ep4 shows positivity in these reactive mesothelial cells, overlapping with CK5/6 staining, 200 \times . (CK5/6 highlights reactive mesothelial cells, 200 \times .)

Lung

TTF1 and napsin A: TTF1 and napsin A are particularly useful for primary lung adenocarcinoma (Figs. 2 and 5). It should be brought to attention that histiocytes can be reactive to napsin A and may be misinterpreted as individual epithelial cells. To address this, duplex TTF1/napsin A shows nuclear TTF1 and cytoplasmic napsin A staining in different colors, which may be helpful in distinguishing histiocytes from epithelial cells, especially when tumor cells are scattered in fluid specimens.

Breast: GATA3, mammaglobin, and GCDFP-15 are the traditional markers for tumors of breast origin. GATA3 is probably the most used marker to confirm metastatic breast carcinoma (Fig. 6). However, GATA3 expression has also been noted in many other organs and pathogeneses, including urothelial cancer, a subset of lung cancer, and gynecologic cancer.²⁶⁻²⁸ Therefore, a panel of mammaglobin and GCDFP-15 may be needed for distinguishing breast cancer from urothelial cancer. SOX10 and TRPS1 are newer markers which can help detect triple-negative breast cancer. Recently, TRPS1 has been reported to be a highly sensitive and specific marker for breast carcinoma, especially in triple-nega-

tive breast cancer.²⁹⁻³¹ TRPS1 could also be used to distinguish metastatic breast cancer from urothelial cancer as this marker is negative in tumors of urothelial origin.^{29,31} It also should be noted that triple-negative breast carcinoma may show positivity for calretinin.²⁰

Gastrointestinal tract: CDX2, SATB2, and CK20 can help distinguish gastrointestinal adenocarcinoma (Fig. 7). Mesothelial cells show focal positivity for CK20. Interpretation of CK20 staining needs to be combined with mesothelial markers and cytomorphology in hematoxylin and eosin-stained sections. CK7 and pan CK, however, have a limited role in effusion as these markers are diffusely positive in mesothelial cells and expressed at least in selective cases of gastrointestinal tumor.

Gynecologic origin: PAX-8, ER, WT1 can suggest a gynecologic primary site. In high-grade serous carcinoma, p53 shows aberrant expression, including overexpression (strong nuclear staining in at least 75% of tumor cells), null pattern (loss of staining), and cytoplasmic pattern (Fig. 8).

SOX10, HMB45, and melanin A are useful markers for confirmation of metastatic melanoma in effusion fluids (Fig. 9). INSM1, synaptophysin, chromogranin, and CD56 are the

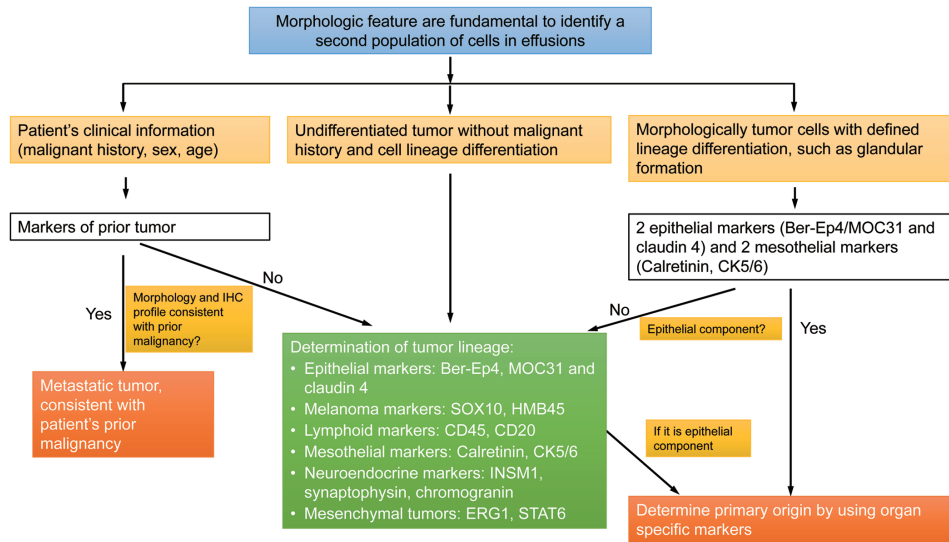


Fig. 4. Algorithm to identify the tumor origin in effusions.

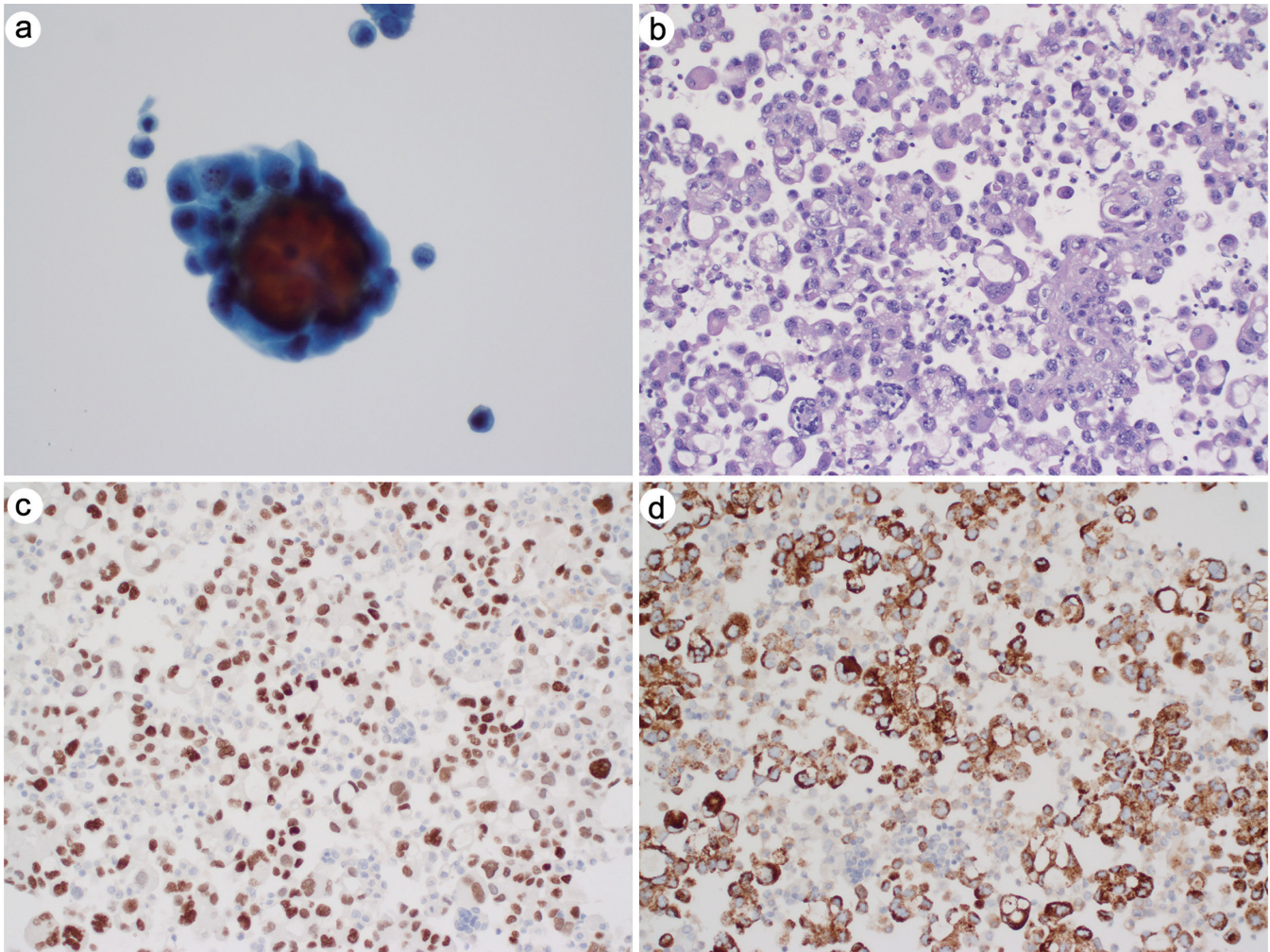


Fig. 5. Metastatic adenocarcinoma with lung primary. (a) ThinPrep, 600x. (b) Hematoxylin and eosin stain, 200x. (c-d) Tumor cells show positivity for TTF1 (c) and napsin A (d); all, 200x.

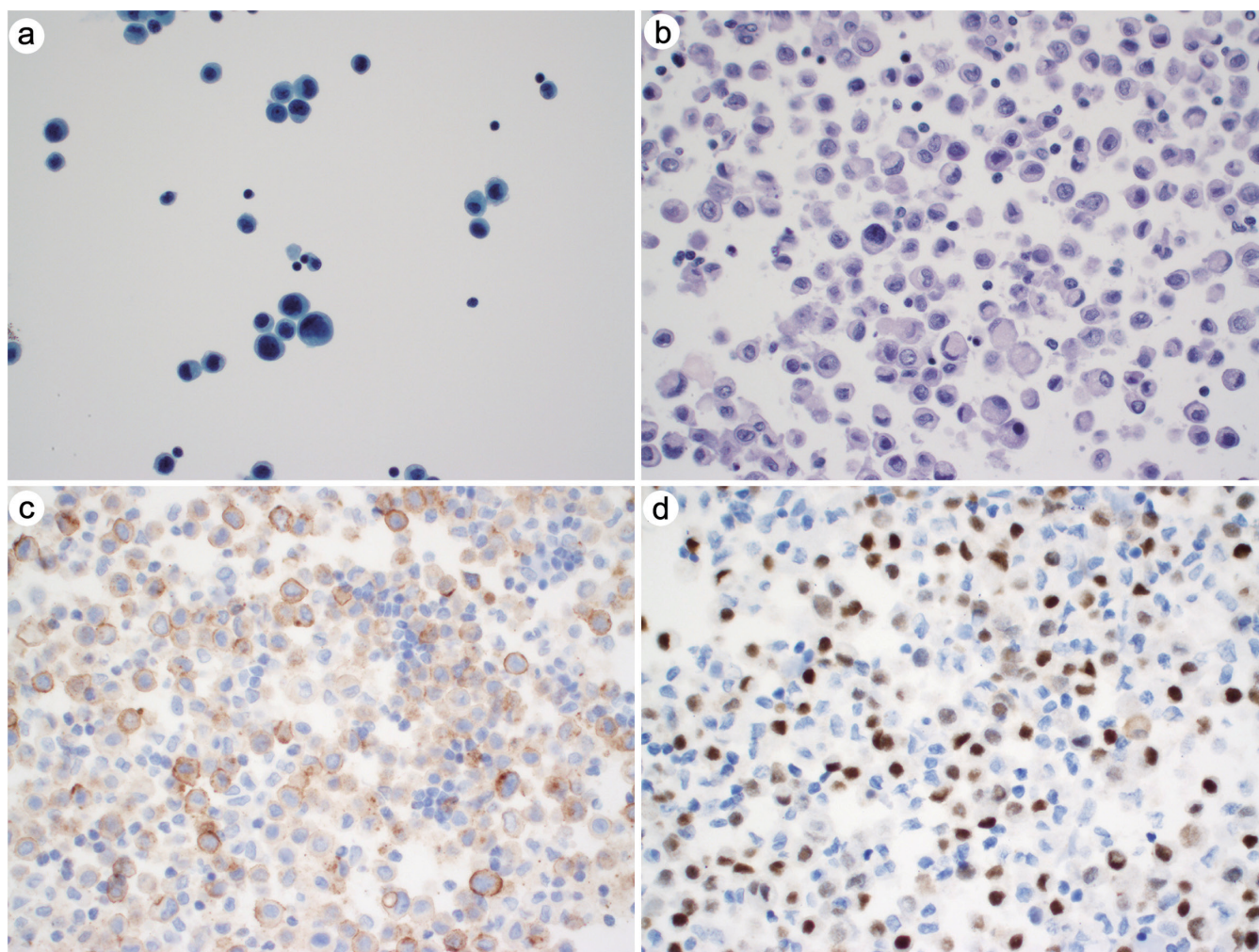


Fig. 6. Metastatic breast lobular carcinoma in pleural fluid. (a) ThinPrep, 400 \times . (b) Hematoxylin and eosin stain, 400 \times . (c–d) Tumor cells show positivity for MOC31 (c) and GATA3 (d); all, 200 \times .

commonly used neuroendocrine markers (Fig. 10).

Prostatic adenocarcinoma: NKX3.1, PSA, and PSAP are shown in Figure 11. Compared with PSA and PSAP, NKX3.1 may show a higher sensitivity in identifying metastatic prostate cancer, especially those of poorly differentiated carcinoma.³²

Thyroid: TTF1, PAX8, and thyroglobulin are common markers for tumors of thyroid origin. It should be noted that PAX8 might be the only marker, though, to be positive in anaplastic thyroid carcinoma.

Kidney: PAX8 is a pan-marker of tumors of renal origin, while CAIX is likely expressed in clear cell renal cell carcinoma.

Urothelial tract: GATA3 is the most commonly used marker for urothelial carcinoma. Uroplakins, p63, p40, and 34BE12 are the other markers likely expressed in tumors of urothelial origin.

Reactive mesothelial proliferation vs. malignant mesothelioma

Distinguishing malignant mesothelioma from fluid reactive mesothelial cells can be difficult. The cytological diagnosis

of malignant mesothelioma by effusion cytology might be controversial in clinical practice, and the diagnostic value of cytology may be questionable.^{33,34} However, in recent years, molecular and biomarker testing that can distinguish neoplastic mesothelial cells from reactive/benign mesothelial cells has enhanced diagnostic accuracy of mesothelioma in effusions. It is currently becoming recognized that mesothelioma diagnosis in cytology specimens is possible and with high specificity and positive prediction value when an adequate sample is provided and ancillary tests are applied.^{35–38}

Guidelines for the diagnosis of mesothelioma were proposed by the International Mesothelioma Interest Group 2015 Supplement and followed by the International Guidelines for Reporting Serous Fluids (Table 2).^{6,39,40} Morphology, high cellularity, presence of complex papillary structures or tissue fragments, variation in cell size and shape, and marked cytologic atypia are useful features for distinguishing and identifying mesothelioma (Table 3) (Fig. 12). Nevertheless, the role of immunohistochemistry in distinguishing mesothelioma from reactive mesothelial cells is still limited. Benign mesothelial cells show strong cytoplasmic staining for desmin and are negative for epithelial membrane antigen (EMA), while mesothelioma cells are negative for desmin but

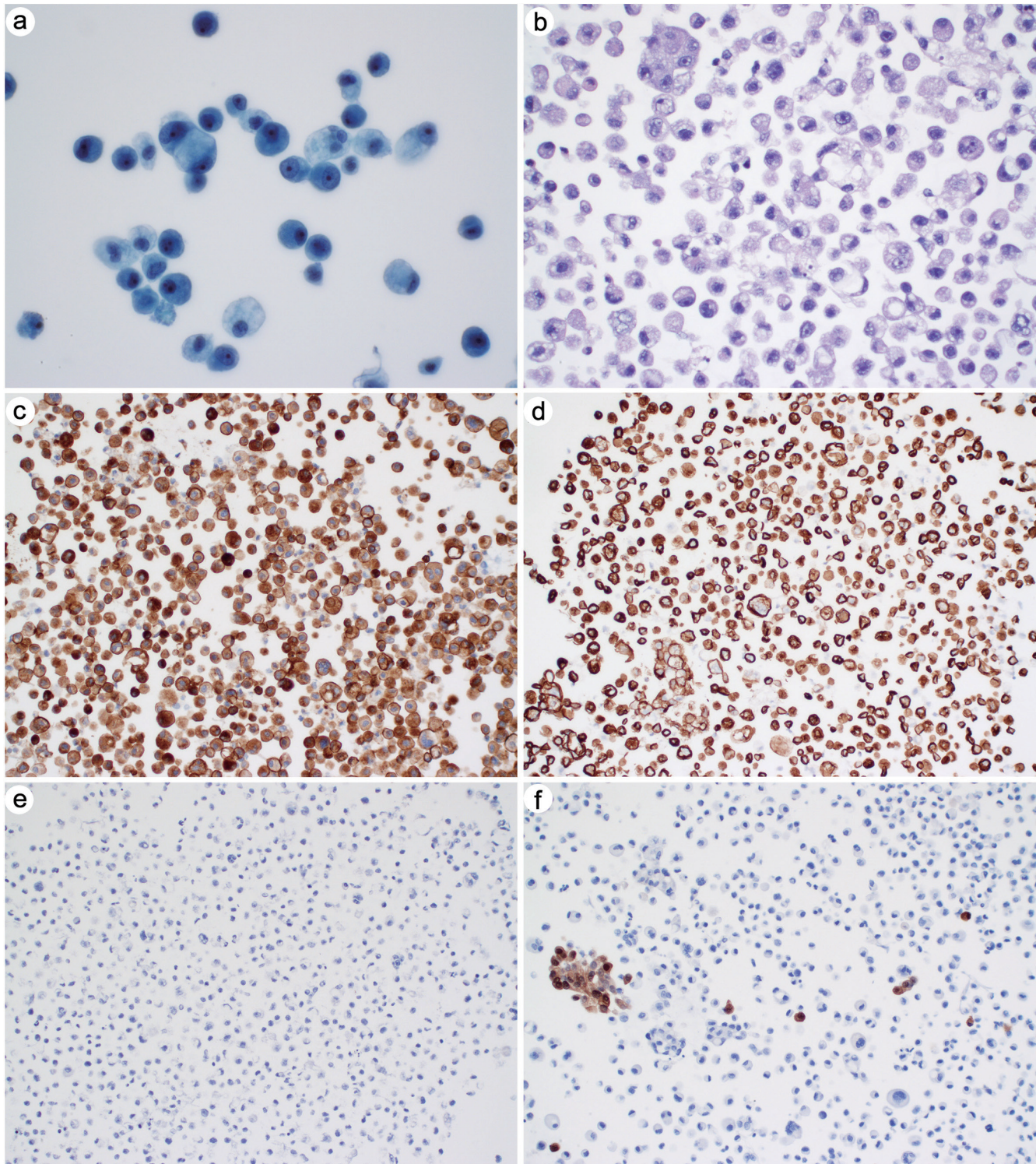


Fig. 7. Metastatic adenocarcinoma of gastrointestinal primary. (a) ThinPrep, 600 \times . (b) Hematoxylin and eosin stain, 400 \times . (c-f) Tumor cells show positivity for claudin-4 (c) and CK7 (d) but negativity for CK20 (e) and calretinin (f); all, 200 \times . Calretinin highlights reactive mesothelial cells.

show membranous band-like staining with EMA.^{20,41-44} However, due to background benign mesothelium, interpretation is not always confidently conclusive. Therefore, desmin and EMA tests are not recommended for diagnostic work-up in

the determination of inclusion or exclusion of mesothelioma.

Homozygous deletion of CDKN2A (9p21) has been frequently detected in mesothelioma by fluorescence *in situ* hybridization testing.⁴⁵ In addition, homozygous co-deletion

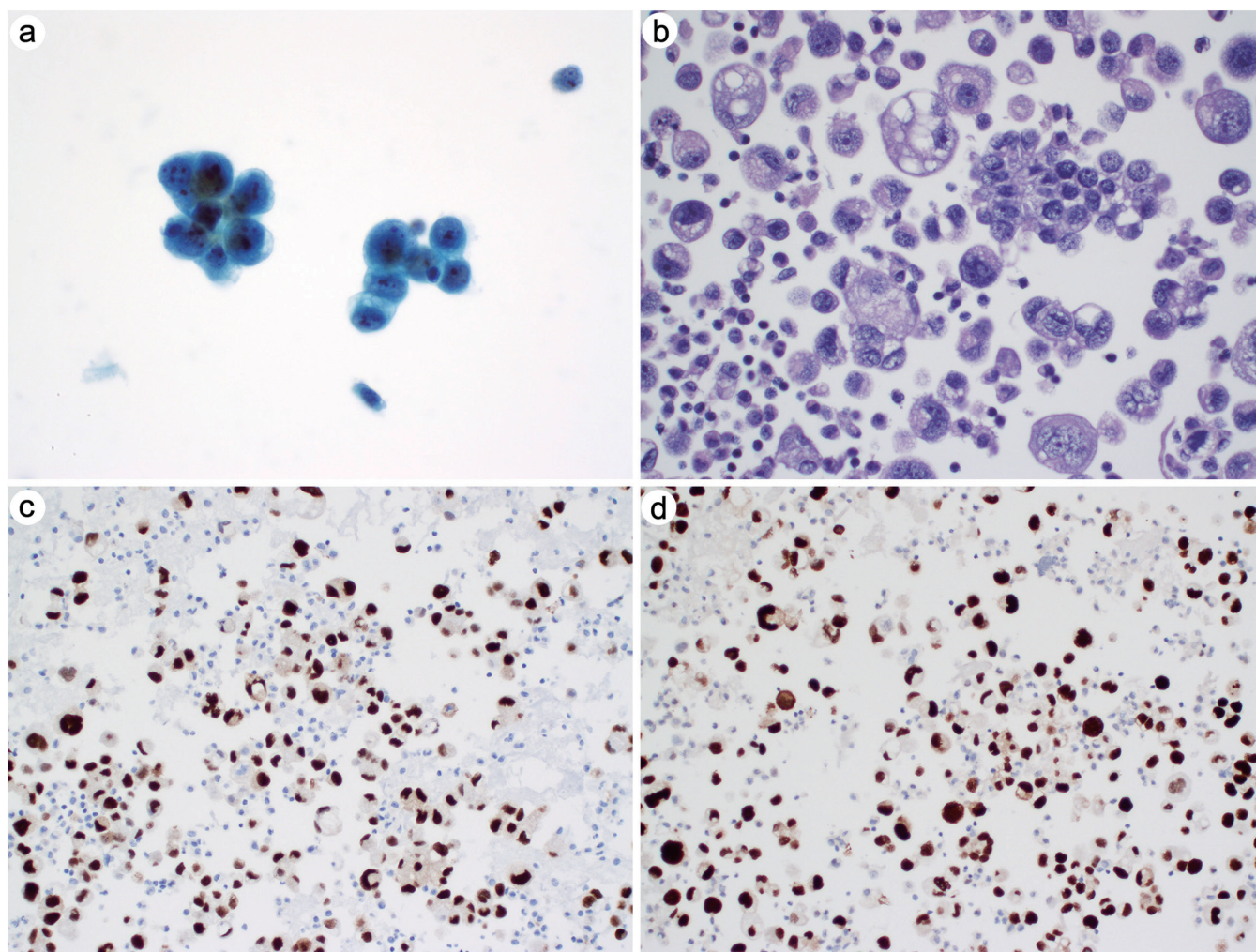


Fig. 8. Metastatic serous carcinoma in pleural fluid. (a) ThinPrep, 600 \times . (b) Hematoxylin and eosin stain, 400 \times . (c-d) Tumor cells show positivity for Pax8 (c) and diffuse and strong positivity for p53 (d); all, 200 \times .

of the MTAP gene occurs in 80–90% of tumors with CDKN2A deletion.⁴⁵ MTAP expression can be detected by immunohistochemical methods, thus it can potentially be used as a surrogate marker for CDKN2A deletion.^{25,46} MTAP shows both nuclear and cytoplasmic staining in normal mesothelial cells, while only the loss of cytoplasmic expression, which occurs in up to 65% of mesothelioma cases,³⁵ is considered abnormal.

BAP1 is a tumor suppressor gene product. Loss of BAP1 expression is found in up to 65% of mesotheliomas and is excluded in reactive mesothelial cells.⁴⁷ A combined immunoprofile of claudin-4, HEG1, MTAP and BAP1 is recommended for differentiating metastatic carcinoma and malignant mesothelioma on cytology and in biopsy specimens with HEG1 and claudin 4 to validate the cell origins and BAP1 and MTAP to confirm mesothelial malignancy.^{21,25,48}

Atypical lymphoid proliferation

Differential diagnosis of lymphocyte-rich serous effusions includes reactive lymphocytes and involvement by a lymphoproliferative disorder. Lymphomatous effusion accounts for 3.6–10% of effusion malignancies, including diffuse large B cell lymphoma, lymphoblastic lymphoma, chronic

lymphocytic leukemia/small lymphocytic lymphoma, mantle cell lymphoma, follicular lymphoma, Burkitt's lymphoma, anaplastic large cell lymphoma, peripheral T cell lymphoma, and Hodgkin's lymphoma.^{49–56} The majority of lymphoproliferative involvement are of B cell origin,^{52,53} and T-lymphoblastic lymphoma is perhaps the most common lymphoma in pediatric patients (36.9%).⁴⁹ Burkitt's lymphoma is more frequently seen in peritoneal fluid compared to pleural and pericardial fluids, and involvement of effusion by Hodgkin's lymphoma is extremely rare.^{49,57}

High-grade non-Hodgkin's B cell lymphoma and T cell-origin lymphoma usually contain large atypical cells with evident morphologic atypia (Fig. 13); however, low-grade B cell non-Hodgkin's B cell lymphoma contains small to intermediate-sized lymphocytes, which are challenging to separate from reactive lymphocytes (Fig. 14). Monomorphic morphology is a valuable indicator to perform further work-up. If a cell block is available, immunohistochemical study with a B cell marker (CD20) and a T cell marker (CD3) is commonly used as an initial step to separate reactive lymphocytes from a possible lymphoproliferative disorder. Predominantly CD3-positive T cells admixed with sporadic CD20-positive B cells are characteristic of a reactive process. If a lymphoma is suspected,

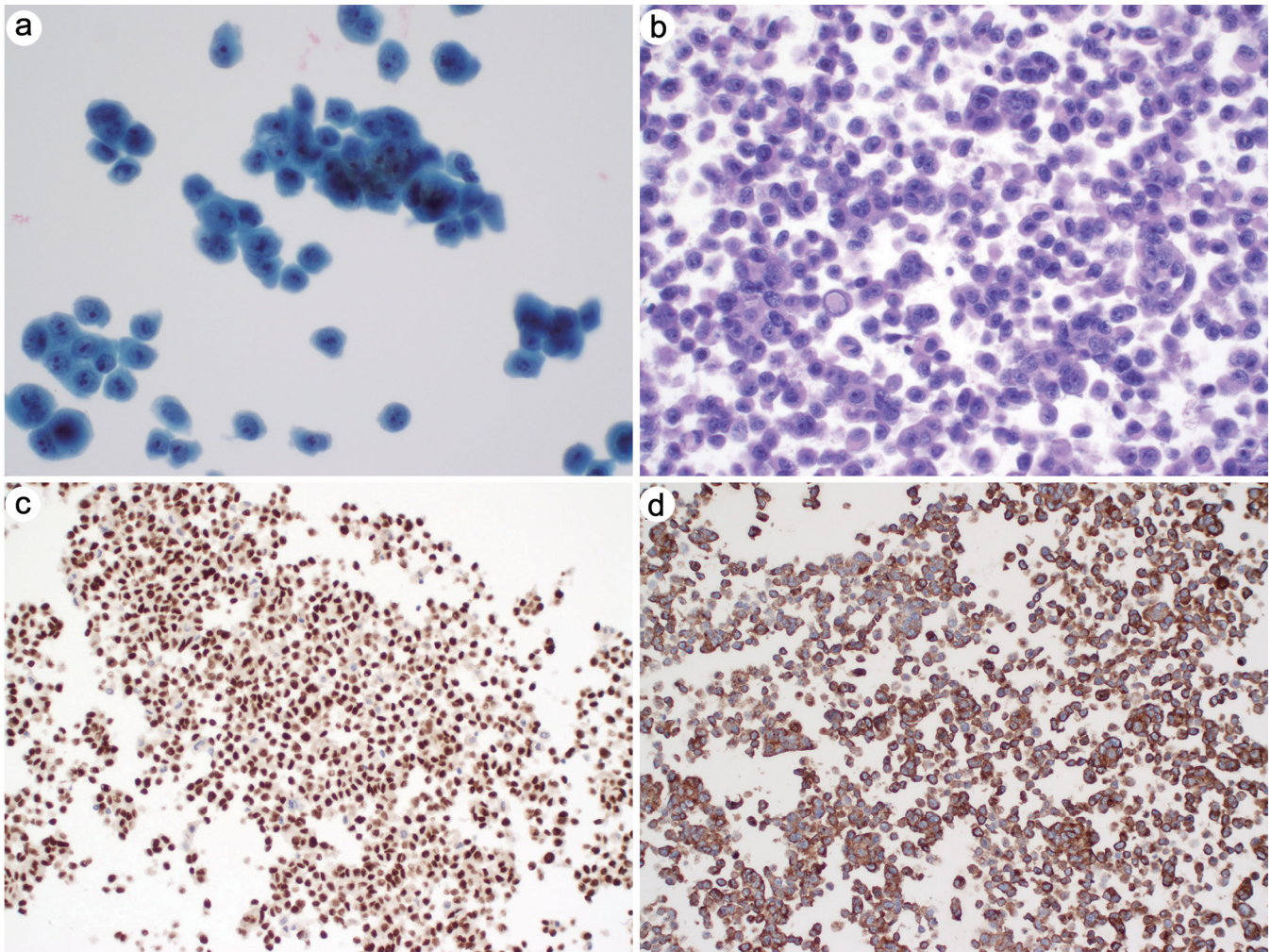


Fig. 9. Metastatic melanoma in pleural fluid. (a) ThinPrep, 600x. (b) Hematoxylin and eosin stain, 400x. (c-d) Tumor cells show positivity for SOX10 (c) and HMB45 (d); all, 200x.

additional various antibodies might be needed to subtype the specific cell lineage and detect aberrant expression of markers. A panel of immunomarkers are determined based on morphologic differential diagnoses, including leukocyte common antigen (CD45), B cell markers (CD20 and PAX5), T cell markers (CD3), and other markers such as CD5, CD10, CD23, BCL-2, BCL-6, cyclinD1, CD15, CD30, ALK-1, CD138 (Tables 4 and 5).⁴⁹

Flow cytometry is essential for distinguishing lymphoma from reactive lymphocytes and for specifying lymphoma subtypes in fluid specimens.^{50,58} It should be noted that neoplastic cells in large cell lymphoma are particularly fragile and can lose cell surface markers, which may result in noncontributory determination by flow cytometry analysis.⁵³ Another pitfall of flow cytometry is that it is not sensitive in detecting T cell-origin and Hodgkin's lymphoma.

In addition, a valuable technique is molecular testing for rearranged immunoglobulin or T cell receptor genes by PCR to assess the presence of clonal lymphoproliferation.⁵⁹ Detection of immunoglobulin heavy chain by fluorescence *in situ* hybridization can also be helpful.⁶⁰

It is noteworthy that lymphoma is rarely manifested initially in effusion; rather, it is more commonly encountered as a

secondary involvement, indicative of an advanced stage.^{49,50} However, primary effusion lymphoma is a rare type of large B cell lymphoma that occurs primarily as pleural/pericardial/peritoneal effusion without lymph node involvement. This entity is strongly associated with HHV8 and HIV, and is usually Epstein-Barr virus-positive. The neoplastic cells are positive for CD45, CD30, EMA, HHV8, and Epstein-Barr virus EBER, but negative for CD20, CD5, CD22, CD23, and CD43.⁶¹

In conclusion, the combined application of cytological features, immunocytochemistry, flow cytometry, PCR, and fluorescence *in situ* hybridization can yield a correct diagnosis and classification of most lymphomatous cases.⁶⁰

ROM and clinical management

The ROM of the MAL category is $99 \pm 0.1\%$ reported from the meta-analysis study.^{6,9} The predicted positive value is almost 100%. Clinically, diagnosis is sufficient to start treatment of these patients with an advanced clinical stage of malignancy (stage IV).

Incorporation of molecular data

Molecular testing, in conjunction with cytomorphology and

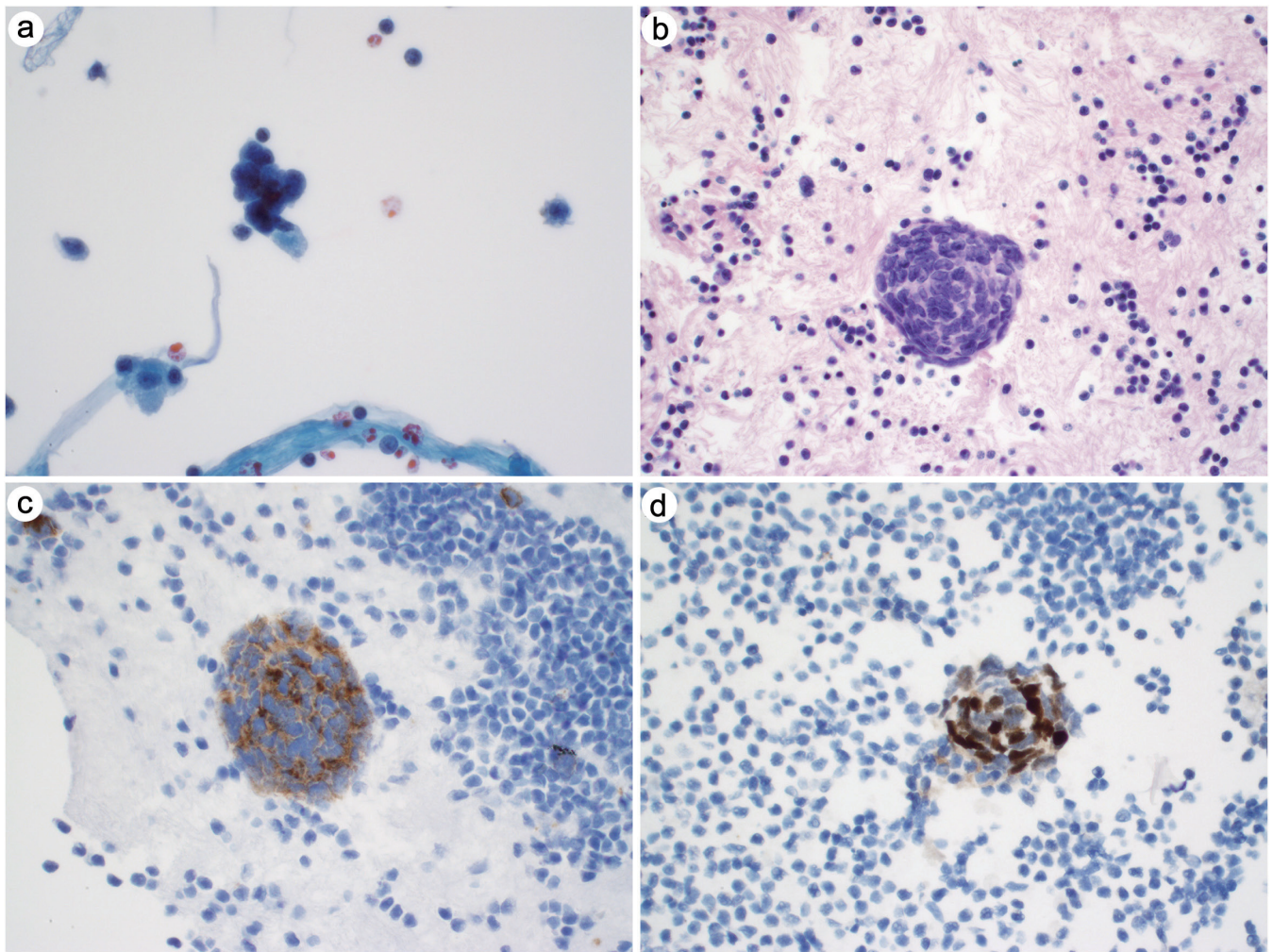


Fig. 10. Metastatic small cell carcinoma in pleural fluid. (a) ThinPrep, 600 \times . (b) Hematoxylin and eosin stain, 400 \times . (c-d) Tumor cells show positivity for synaptophysin (c) and INSM1 (d); all, 400 \times .

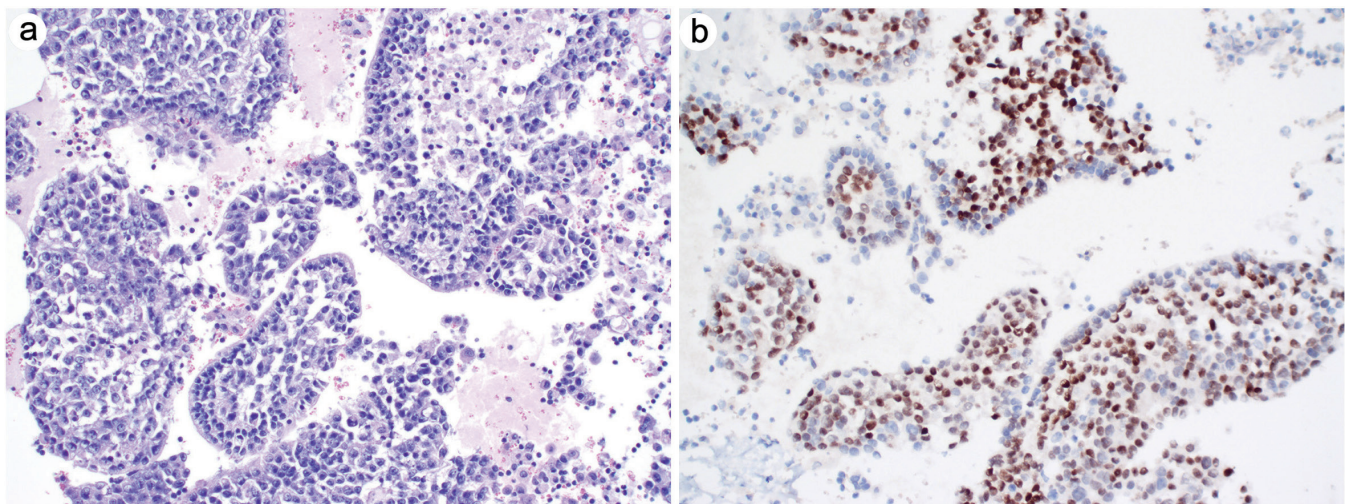


Fig. 11. Metastatic prostatic adenocarcinoma in pleural fluid. (a) Hematoxylin and eosin stain, 200 \times . (b) Tumor cells are positive for NKX3.1, 200 \times .

Table 2. International guidelines for reporting serous effusions (mesothelioma)³⁵

Report as "mesothelioma" in the following conditions:
Morphologically malignant mesothelium (high cellularity and atypia) and supportive radiological findings. Additional biomarkers are optional. For pericardial fluids always confirm malignancy with biomarkers.
Morphologically malignant but of moderate cellularity and supportive radiological findings. Perform biomarker detection to support malignancy.
Morphologically malignant but radiological findings are not available. Perform biomarker detection to support malignancy.
Morphologically malignant but radiological findings are negative. Perform biomarker detection to support malignancy and include a comment to raise concern for MIS.
Report as "suspicious for mesothelioma" in the following conditions:
Morphologically malignant cases and negative radiology if biomarkers are not supportive of malignancy.
Morphologically malignant pericardial fluid if biomarkers are not supportive of malignancy.
Morphologically malignant but fluid is of low to moderate cellularity, positive radiological findings but negative for biomarkers.
Report as "atypical mesothelial cell proliferation" in the following conditions:
Only when the cytologic atypia exceeds that expected in reactive conditions or if reactive mesothelium cannot be supported by ancillary tests, but the findings are not enough to raise concern for mesothelioma. The term "atypical" should not be used in the context of reactive mesothelium, which instead should be diagnosed as negative for malignancy.

Note: Some mesotheliomas do not exhibit any abnormal biomarker results; consequently, negative biomarkers do not exclude the diagnosis of mesothelioma. MIS, Mesothelioma in situ.

immunohistochemical studies, can assist in confirming the diagnosis of malignant mesothelioma, identifying a metastatic neoplasm, and determining the origin of a metastasis.⁶² Paraffin-fixed cell blocks are usually prepared from effusion specimens and are essential for ancillary testing including immunohistochemistry, PCR, fluorescence *in situ* hybridization, and next-generation sequencing molecular testing, for both diagnostic and therapeutic purposes.⁶² In addition, effusion supernatants, even after centrifugation, can still provide reliable material for analyzing DNA, RNA, microRNA, and proteins expressed by tumor cells. Both cells and supernatants can yield valuable molecular information that can assist in the diagnosis.^{63,64}

Conclusions

Since the introduction of TIS, it has been applied to pleural, peritoneal, and pericardial fluids in several studies.^{8,13,65–69}

However, the ROM proposed in the TIS system was determined from a meta-analysis of historic data predating TIS.⁹ We have summarized recent studies that reclassified effusion cases using the TIS system and have provided an updated perspective on the distribution and ROM for each category in different body cavities. The distribution of each category is summarized in Table 6.^{8,9,11–14,56,65,67–77} Reported ROMs for all categories are summarized in Table 7.^{9,12–14,56,65,67–77} In summary, the distribution rates of ND, NFM, AUS, SFM and MAL range from 0–11%, 36–81%, 0.2–6%, 0.9–6.3% and 12.3–56.2%, respectively. The ROMs of ND, NFM, AUS, SFM, and MAL range from 0–100%, 1.8–51.6%, 0–88%, 49–93%, and 98–100%, respectively.

Overall, TIS defines clear diagnostic criteria for five categories: ND, NFM, AUS, SFM, and MAL. This five-tier system supports a standardized reporting structure for verifying malignancy, offering high specificity, positive predictive value, and modest to high sensitivity.^{68,69} Increasingly available

Table 3. Reactive mesothelial cells vs. mesothelioma

Feature	Reactive mesothelial cells	Mesothelioma
Cellularity	Low to moderate	High
Architecture	Individual, small clusters, flat sheets, and two-dimensional aggregates	Large clusters, complex papillary structures; Three-dimensional aggregates, irregular edge
Cytomorphology	Comparatively uniform; Small prominent nucleoli	Pleomorphic; Multiple macronucleoli; Marked cytologic atypia
EMA by immunohistochemistry	–	+ (membranous)
Desmin by immunohistochemistry	+ (cytoplasmic)	–
MTAP by immunohistochemistry	Nuclear and cytoplasm	Loss in 80–90% tumors with CDKN2A deletion
BAP1 by immunohistochemistry	Retained nuclear staining	–
Homozygous deletion of p16/CDKN2A by fluorescence <i>in situ</i> hybridization	–	+

BAP1, BRCA1-associated protein; CDKN2A, cyclin-dependent kinase inhibitor 2A; EMA, epithelial membrane antigen; MTAP, methylthioadenosine phosphorylase.

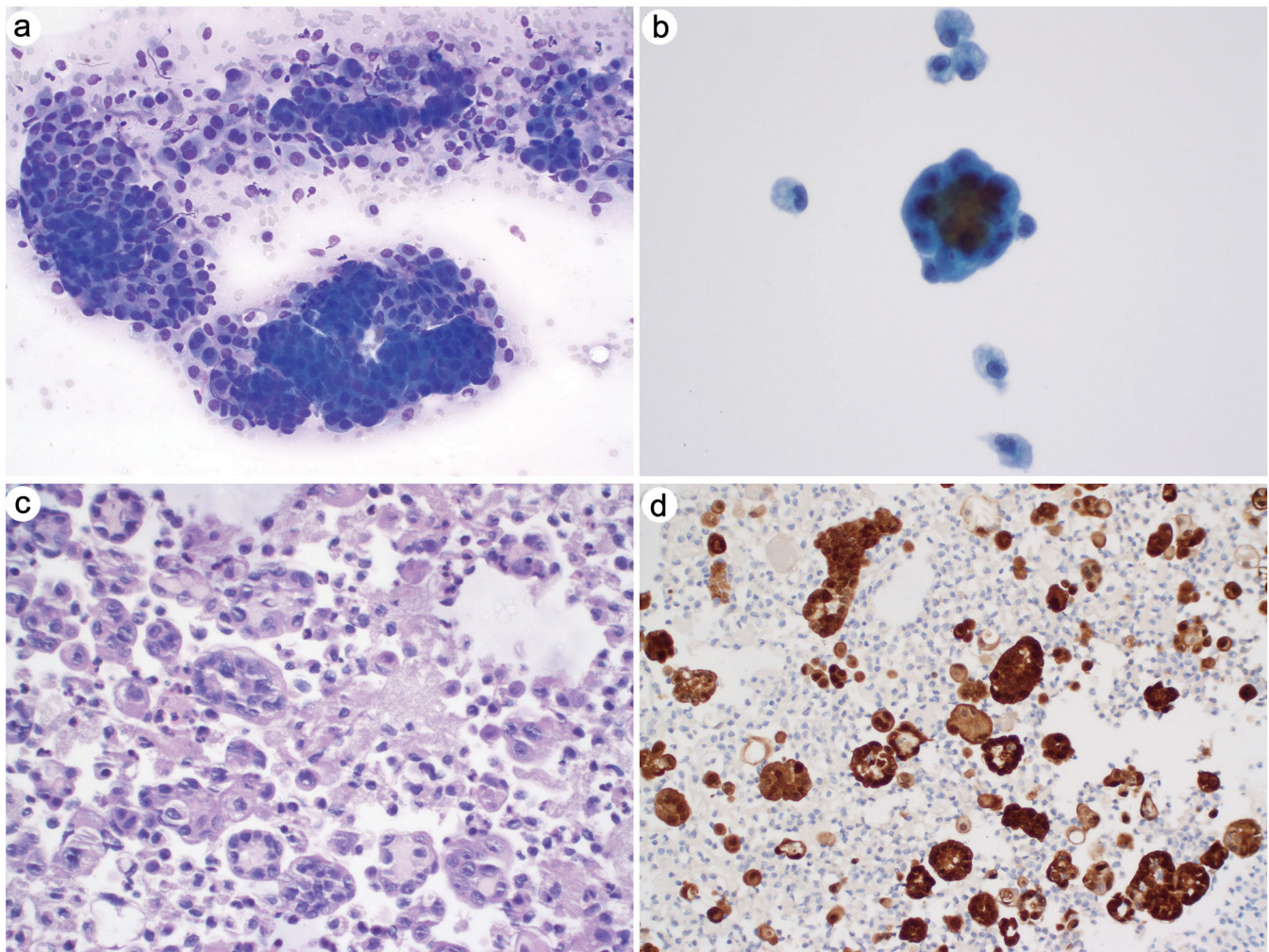


Fig. 12. Malignant mesothelioma. (a) Touch prep with Diff-Quick stain, 200 \times . (b) ThinPrep, 600 \times . (c) Hematoxylin and eosin stain, 400 \times . (d) Tumor cells show positivity for calretinin; 200 \times .

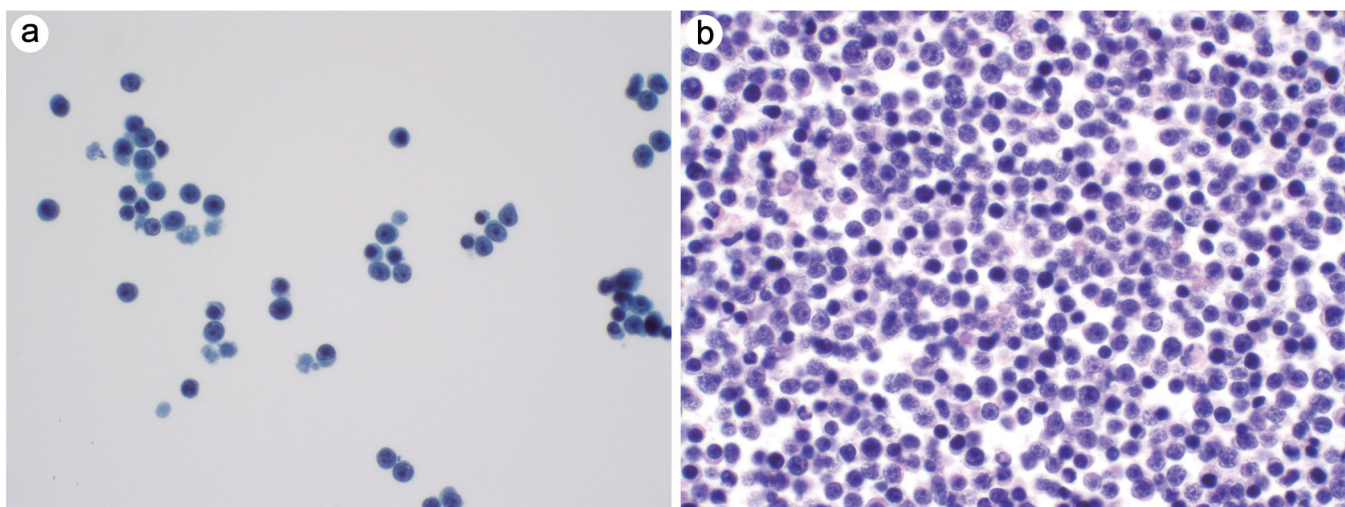


Fig. 13. Non-Hodgkin B cell lymphoma. Medium to large lymphocytes with prominent nucleoli are in the pleural fluid. (a) ThinPrep, 600 \times . (b) Hematoxylin and eosin stain, 600 \times .

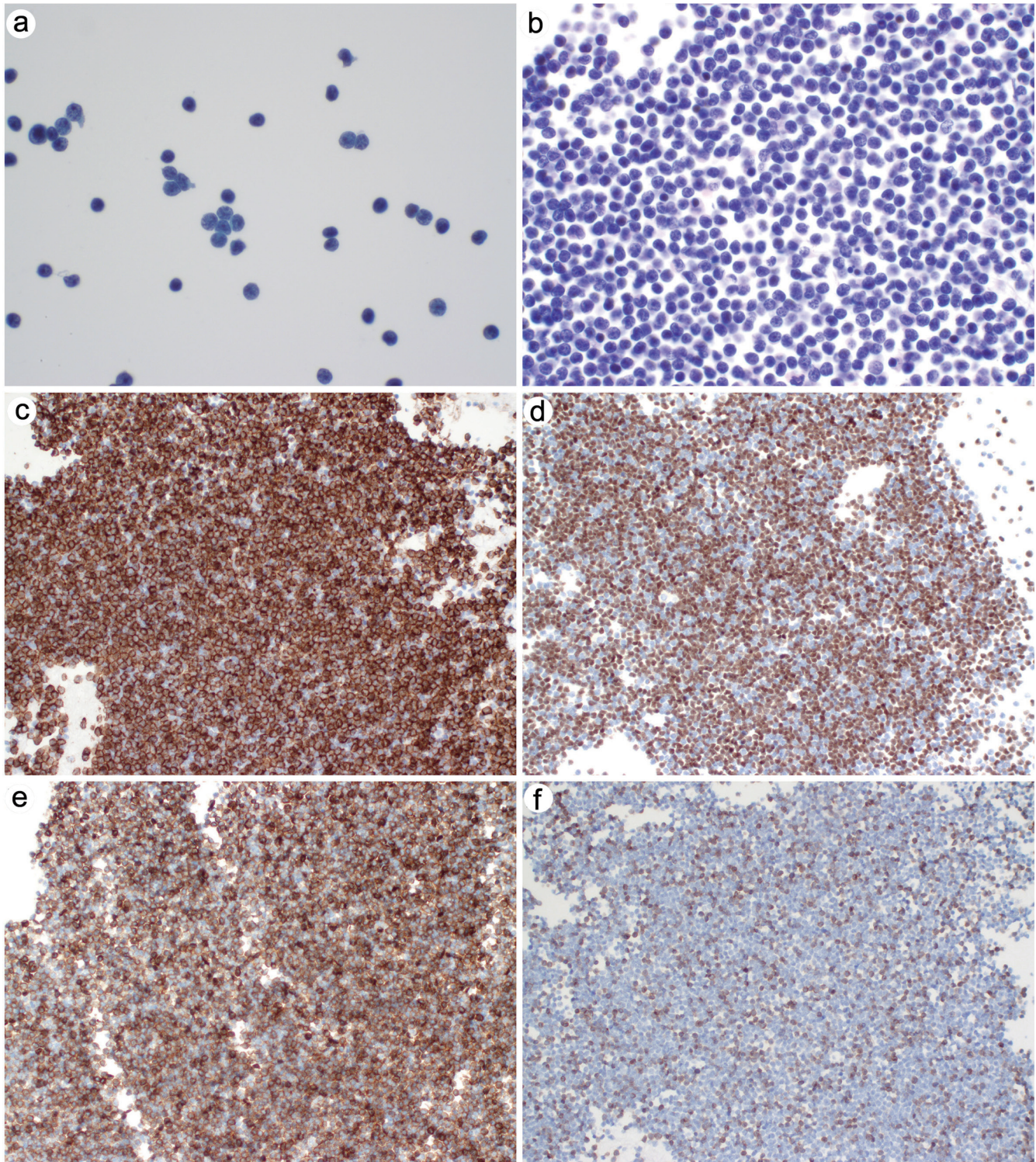


Fig. 14. Chronic lymphocytic leukemia in pleural effusion. Small to medium-sized lymphocytes are monotonous. (a) ThinPrep, 600 \times . (b) Hematoxylin and eosin stain, 600 \times . (c–e) Neoplastic lymphocytes show positivity for CD20, PAX5 and CD5; all, 200 \times . (f) CD3 highlights scattered T-lymphocytes, 200 \times .

data provide evidence that the standardized categorization system effectively stratifies malignancy risks, facilitating the triage of clinical management.⁷⁸ However, despite the defined diagnostic criteria, the AUS category remains a diag-

nostically gray zone in effusion cytology. The definition of ND is defined, but its practical threshold varies, contributing to the wide variability in the ROM for the ND category.⁷⁹ Further validation studies should be conducted to contribute more

Table 4. Immunohistochemical basic panel for small lymphocytes^{49,61}

Type	Positive stains	Negative stains
Follicular lymphoma	Pan B cell markers (CD19, CD20, CD79a, PAX5), CD10, BCL6, BCL2	CD5, CD23, cyclin D1
Chronic lymphocytic leukemia/ small lymphocytic lymphoma	Pan B cell markers (CD19, CD20, CD79a, PAX5), CD5, CD23, LEF1	CD10, cyclin D1, SOX11
Mantle cell lymphoma	Pan B cell markers (CD19, CD20, CD79a), CD5, cyclin D1, SOX11	CD10, BCL6, CD200, LEF1
Marginal zone lymphoma	Pan B cell markers (CD19, CD20, CD79a)	CD5, CD10, CD23, BCL6, cyclin D1, SOX1, LEF1

Table 5. Immunohistochemical basic panel for intermediate to large-size lymphocytes⁶¹

Type	Positive stains	Negative stains
B-lymphoblastic lymphoma	CD19, CD79a, PAX5, CD10, TdT, CD34, CD99	
T-lymphoblastic lymphoma	CD7, CD3, CD5, TdT, CD34, CD99, CD1a, CD117	
Burkitt's lymphoma	Pan B cell antigens (CD19, CD20, CD79a, PAX5), CD10, BCL6, CD38; KI67 > 95%; MYC	CD5, CD23, CD138, BCL2, cyclin D1, TdT
Diffuse large B cell lymphoma	Pan B cell markers (CD19, CD20, CD79a, PAX5), variable expression of CD10, BCL6, MUM1, BCL2	CD3, cyclin D1, TdT
Plasmablastic lymphoma	CD138, CD38, IRF4/MUM1, CD79a (40%), CD10, CD56, CD30, EBER (<i>in situ</i> hybridization), MYC	CD20, PAX5, CD45
Primary effusion lymphoma	CD45, CD30 CD38, HHV8 by PCR or IHC, Epstein-Barr virus	CD20

data on the ROM in each category of specific body cavities, providing more evidence for clinical management and further refining the classification. Regardless, pelvic and peritoneal washing specimens still pose diagnostic dilemmas because of the presence of Müllerian borderline tumors. Addressing this issue may require a subdivision of the TIS, a topic we did not cover in this review but one that requires further investigation.⁷⁹

Acknowledgments

None.

Funding

NIH research grant P30CA016359 supported this study.

Conflict of interest

GPC is the Editor-in-Chief of *Journal of Clinical and Translational Pathology*. The authors have no other conflicts of interest to declare.

Author contributions

Manuscript writing (MHW) and critical revision (MHW, AC, GC).

References

- [1] Shidham BV, Atkinson BF. Cytopathologic diagnosis of serous fluids. Philadelphia: Saunders; 2007.
- [2] Heidari B, Bijani K, Eissazadeh M, Heidari P. Exudative pleural effusion: effectiveness of pleural fluid analysis and pleural biopsy. *East Mediterr Health J* 2007;13(4):765–773. PMID:17955757.
- [3] Nance KV, Shermer RW, Askin FB. Diagnostic efficacy of pleural biopsy as compared with that of pleural fluid examination. *Mod Pathol* 1991;4(3):320–324. PMID:2068057.
- [4] Chandra A, Crothers B, Iyama-Kurtycz D, Schmitt F. The International System for Serous Fluid Cytopathology. Berlin, Heidelberg, Germany: Springer; 2020.
- [5] Chandra A, Crothers B, Kurtycz D, Schmitt F. Announcement: The International System for Reporting Serous Fluid Cytopathology. *Acta Cytol* 2019;63(5):349–351. doi:10.1159/000501536, PMID:31234178.
- [6] Chandra A, Crothers B, Kurtycz D, Schmitt F. The International System for Reporting Serous Fluid Cytopathology. 1st ed. Cham: Springer; 2020.
- [7] Coconubo DM, Baskota SU, Li R, Srivastava P, Cuda J, Khader S. Reassessing the optimal volume for malignancy detection in serous fluid cytology. *Cancer Cytopathol* 2022;130(7):551–557. doi:10.1002/cncy.22577, PMID:35468659.
- [8] Rodriguez EF, Jones R, Gabrielson M, Santos D, Pastorello RG, Maleki Z. Application of the International System for Reporting Serous Fluid Cytopathology (ISRSFC) on Reporting Pericardial Effusion Cytology. *Acta Cytol* 2020;64(5):477–485. doi:10.1159/000507311, PMID:32422631.
- [9] Farahani SJ, Baloch Z. Are we ready to develop a tiered scheme for the effusion cytology? A comprehensive review and analysis of the literature. *Diagn Cytopathol* 2019;47(11):1145–1159. doi:10.1002/dc.24278, PMID:31301215.
- [10] Pinto D, Chandra A, Crothers BA, Kurtycz DFI, Schmitt F. The international system for reporting serous fluid cytopathology—diagnostic categories and clinical management. *J Am Soc Cytopathol* 2020;9(6):469–477. doi:10.1016/j.jasc.2020.05.015, PMID:32620534.
- [11] Gokozan HN, Harbhajanka A, Lyden S, Michael CW. Root cause analysis of indeterminate diagnoses in serous fluids cytopathology. *Diagn Cytopathol* 2021;49(5):633–639. doi:10.1002/dc.24653, PMID:33125186.
- [12] Wang M, Sun T, Jiao J, Wang H. Application of the International System for Reporting Serous Fluid Cytopathology to pericardial fluid: Root cause analysis of indeterminate diagnoses, cytohistological correlation, and assessment of malignancy risk. *Cancer Cytopathol* 2023;131(7):433–441. doi:10.1002/cncy.22696, PMID:36973963.
- [13] Hou T, Landon G, Stewart J, Roy-Chowdhuri S. The value of a tiered cytology diagnostic reporting system in assessing the risk of malignancy in indeterminate serous effusions. *Cancer Cytopathol* 2021;129(1):75–82. doi:10.1002/cncy.22345, PMID:32809259.
- [14] Zhu YL, Ren WH, Wang Q, Jin HZ, Guo YY, Lin DM. A retrospective analysis of serous effusions based on the newly proposed international system for reporting serous fluid cytopathology: a report of 3633 cases in an oncological center. *Diagn Pathol* 2022;17(1):56. doi:10.1186/s13000-022-01241-4, PMID:35780135.
- [15] Skok K, Hladnik G, Grm A, Crnjac A. Malignant Pleural Effusion and Its Current Management: A Review. *Medicina (Kaunas)* 2019;55(8):490. doi:10.3390/medicina55080490, PMID:31443309.
- [16] Gayen S. Malignant Pleural Effusion: Presentation, Diagnosis, and Management. *Am J Med* 2022;135(10):1188–1192. doi:10.1016/j.amjmed.2022.04.017, PMID:35576996.
- [17] Husain AN, Colby T, Ordonez N, Krausz T, Attanoos R, Beasley MB, *et al*. Guidelines for pathologic diagnosis of malignant mesothelioma: 2012 update of the consensus statement from the International Mesothelioma In-

Table 6. Distribution of effusions following the International System for Reporting Serous Fluid Cytopathology

Reference	Specimen	ND, %	NFM, %	AUS, %	SUS, %	MAL, %
Zhu et al. 2022 ¹⁴ (n = 2326)	Pleural	0.4	29.7	3.1	19	47.7
Sun et al. 2022 ⁶⁷ (n = 299)	Pleural	5	76	5	1.7	12.3
Xu et al. 2021 ⁷⁰ (n = 2454)	Pleural	1.2	68.1	6.2	2.2	22.4
Bharti et al. 2022 ⁷² (n = 690)	Pleural	7.9	84.1	0.87	1.16	5.94
Straccia et al. 2022 ⁷³ (n = 1292)	Pleural	2.1	78.5	6.6	2.3	10.5
Ahuja et al. 2021 ⁷¹ (n = 831)	Pleural	0.4	76.4	7.8	7.2	8.2
Jha et al. 2021 ⁵⁶ (n = 939)	Pleural	4.37	74.23	4.69	2.88	13.84
Pinto et al. 2021 ⁶⁵ (n = 350)	Pleural	1.43	72.29	2	4	20.57
Pergaris et al. 2021 ⁶⁹ (n = 528)	Pleural	0.57	81.44	2.84	2.84	12.31
Lobo et al. 2020 ⁶⁸ (n = 1496)	Pleural	0.8	63.1	0.6	3.6	31.9
Farahan et al. 2019 ⁹ (n = 11799)	Pleural	0.3	69.2	0.6	3.5	26.4
Zhu et al. 2022 ¹⁴ (n = 1145)	Peritoneal	0.2	28.6	2	19.4	49.9
Rakheja et al. 2022 ⁷⁴ (n = 818)	Peritoneal	15.2	72.7	3.2	1.5	7.3
Sun et al. 2022 ⁶⁷ (n = 446)	Peritoneal	11	77.1	4.1	0.9	12.4
Straccia et al. 2022 ⁷³ (n = 2257)	Peritoneal	1.3	84	1.7	2.3	10.5
Ahuja et al. 2021 ⁷¹ (n = 457)	Peritoneal	1.1	80.5	4.2	3.7	10.5
Pergaris et al. 2021 ⁶⁹ (n = 500)	Peritoneal	1.2	69.4	2.6	2.4	24.4
Lobo et al. 2020 ⁶⁸ (n = 763)	Peritoneal	0.7	59.9	12	37	25.2
Farahani et al. 2019 ⁹ (n = 3978)	Peritoneal	0.3	59.7	0.4	2.6	37
Li et al. 2023 ⁷⁵ (n = 358)	Pericardial	4.7	39.5	12.2	5.3	38.3
Wang et al. 2023 ¹² (n = 465)	Pericardial	4.1	71.4	4.5	2.4	17.6
Zhu et al. 2022 ¹⁴ (n = 117)	Pericardial	0.9	39.3		11.1	48.7
Straccia et al. 2022 ⁷³ (n = 241)	Pericardial	1.6	71.7	4.1	3	19.5
Song et al. 2021 ⁷⁶ (n = 574)	Pericardial	0	66.6	9.4	1.7	22.3
Lobo et al. 2020 ⁶⁸ (n = 64)	Pericardial	–	35.9	1.6	6.3	56.2
Rodriguez et al. 2020 ⁸ (n = 252)	Pericardial	0	84.3	4.3	1.3	10
Farahani et al. 2019 ⁹ (n = 941)	Pericardial	–	70	0.2	1.9	27.9
Kolte et al. 2021 ⁷⁷ (n = 652)	Combined	2	71.6	2.4	4.7	19.3
Gokozan et al. 2021 ¹¹ (n = 911)	Combined	1	73.2	5.6	3	17.2
Hou et al. 2021 ¹³ (n = 2405)	Combined	–	42	6	4	48

AUS, atypia of uncertain significance; MAL, malignant; ND, nondiagnostic; NFM, negative for malignancy; SFM, suspicious of malignancy.

- terest Group. Arch Pathol Lab Med 2013;137(5):647–667. doi:10.5858/arpa.2012-0214-OA, PMID:22929121.
- [18] Hyun TS, Barnes M, Tabatabai ZL. The diagnostic utility of D2-40, calretinin, CK5/6, desmin and MOC-31 in the differentiation of mesothelioma from adenocarcinoma in pleural effusion cytology. Acta Cytol 2012;56(5):527–532. doi:10.1159/000339586, PMID:23075894.
- [19] Lyons-Boudreaux V, Mody DR, Zhai J, Coffey D. Cytologic malignancy versus benignancy: how useful are the “newer” markers in body fluid cytology? Arch Pathol Lab Med 2008;132(1):23–28. doi:10.5858/2008-132-23-cmvbhu, PMID:18181669.
- [20] Mneimneh WS, Jiang Y, Harbhajanka A, Michael CW. Immunocytochemistry in the work-up of mesothelioma and its differential diagnosis and mimickers. Diagn Cytopathol 2021;49(5):582–595. doi:10.1002/dc.24720, PMID:33675675.
- [21] Bernardi L, Bizzarro T, Pironi F, Szymczuk S, Buda R, Fabbri E, et al. The “Brescia panel” (Claudin-4 and BRCA-associated protein 1) in the differential diagnosis of mesothelioma with epithelioid features versus metastatic carcinomas. Cancer Cytopathol 2021;129(4):275–282. doi:10.1002/cncy.22368, PMID:33045147.
- [22] Najjar S, Gan Q, Stewart J, Sneige N. The utility of claudin-4 versus MOC-31 and Ber-EP4 in the diagnosis of metastatic carcinoma in cytology specimens. Cancer Cytopathol 2023;131(4):245–253. doi:10.1002/cncy.22672, PMID:36522809.
- [23] Patel A, Borczuk AC, Siddiqui MT. Utility of Claudin-4 versus BerEP4 and B72.3 in pleural fluids with metastatic lung adenocarcinoma. J Am Soc Cytopathol 2020;9(3):146–151. doi:10.1016/j.jasc.2019.12.003, PMID:32184064.
- [24] Oda T, Ogata S, Kawaguchi S, Minabe S, Dokyu M, Takahashi H, et al. Immunocytochemical utility of claudin-4 versus those of Ber-EP4 and MOC-31 in effusion cytology. Diagn Cytopathol 2016;44(6):499–504. doi:10.1002/dc.23476, PMID:27015745.
- [25] Hiroshima K, Wu D, Hamakawa S, Tsuruoka S, Ozaki D, Orikasa H, et al. HEG1, BAP1, and MTAP are useful in cytologic diagnosis of malignant mesothelioma with effusion. Diagn Cytopathol 2021;49(5):622–632. doi:10.1002/dc.24475, PMID:32441895.
- [26] Miettinen M, McCue PA, Sarlomo-Rikala M, Rys J, Czapiewski P, Wazny K, et al. GATA3: a multispecific but potentially useful marker in surgical pathology: a systematic analysis of 2500 epithelial and nonepithelial tumors. Am J Surg Pathol 2014;38(1):13–22. doi:10.1097/PAS.0b013e3182a0218f, PMID:24145643.
- [27] Shi Y, Brandler TC, Yee-Chang M, Cangiarella J, Wei XJ, Leung A, et al. Application of GATA 3 and TTF-1 in differentiating parathyroid and thyroid nodules on cytology specimens. Diagn Cytopathol 2020;48(2):128–137. doi:10.1002/dc.24338, PMID:31713988.
- [28] Zhao L, Antic T, Witten D, Paner GP, Taxy JB, Husain A, et al. Is GATA3 expression maintained in regional metastases?: a study of paired primary and

Table 7. Comparison of the ROM in previous studies

Reference	Specimen	ND, %	NFM, %	AUS, %	SUS, %	MAL, %
Farahani <i>et al.</i> 2019 ^{a9}	Combined	17.4 ± 8.9	21 ± 0.3	66 ± 10.6	82 ± 4.8	99 ± 0.1
Zhu <i>et al.</i> 2022 ¹⁴	Pleural	40	29.8	49.3	99.3	100
Sun <i>et al.</i> 2022 ⁶⁷	Pleural	0	1.8	37.5	83.3	100
Xu <i>et al.</i> 2022 ⁷⁰	Pleural	26.7	12	62.3	77.8	100
Bharti <i>et al.</i> 2022 ⁷²	Pleural	30.9	12.9	100	100	90.2
Straccia <i>et al.</i> 2022 ⁷³	Pleural	18.5	15	45.3	93	100
Ahuja <i>et al.</i> 2021 ⁷¹	Pleural	0	2.1	33.3	94.1	100
Jha <i>et al.</i> 2021 ⁵⁶	Pleural	87.5	51.61	88.23	87.5	100
Pinto <i>et al.</i> 2021 ⁶⁵	Pleural	40	20.16	42.86	78.57	100
Pergaris <i>et al.</i> 2021 ⁶⁹	Pleural	0	5.3	33.33	93.33	100
Lobo <i>et al.</i> 2020 ⁶⁸	Pleural	57.1	23.9	50	76.2	100
Farahan <i>et al.</i> 2019 ⁹	Pleural	25.7*	22.3 ± 5.6	71.8 ± 17.7	75.9 ± 9.3	99.2 ± 0.2
Zhu <i>et al.</i> 2022 ¹⁴	Peritoneal	0	27.5	60.9	99.5	100
Rakheja <i>et al.</i> 2022 ⁷⁴	Peritoneal	16.9	12.1	50	80	100
Sun <i>et al.</i> 2022 ⁶⁷	Peritoneal	8.3	1.2	44.4	100	100
Straccia <i>et al.</i> 2022 ⁷³	Peritoneal	19.3	10.4	43.5	100	100
Ahuja <i>et al.</i> 2021 ⁷¹	Peritoneal	50	4.8	22.2	83.3	100
Pergaris <i>et al.</i> 2021 ⁶⁹	Peritoneal	16.66	9	38.46	83.33	100
Lobo <i>et al.</i> 2020 ⁶⁸	Peritoneal	100	26.3	62.5	91.7	100
Farahani <i>et al.</i> 2019 ⁹	Peritoneal	0*	27.1 ± 7.2	40.5 ± 0.2	84.6 ± 3.8	98.4 ± 1.1
Li <i>et al.</i> 2023 ⁷⁵	Pericardial	23.5	29.1	56.8	78.9	99.3
Wang <i>et al.</i> 2023 ¹²	Pericardial	0	1.3	20	100	100
Zhu <i>et al.</i> 2022 ¹⁴	Pericardial	100 *	17.4	0	100	100
Straccia <i>et al.</i> 2022 ⁷³	Pericardial	25	13.2	35	100	100
Song <i>et al.</i> 2021 ⁷⁶	Pericardial	–	3.7	20.9	57.1	89.3
Lobo <i>et al.</i> 2020 ⁶⁸	Pericardial	–	0	0	No data	100
Farahani <i>et al.</i> 2019 ⁹	Pericardial	–	30.9 ± 9.2	100*	48.7 ± 0.1	99.1 ± 0.9
Kolte <i>et al.</i> 2021 ⁷⁷	Combined	23	25	56	80.6	90
Hou <i>et al.</i> 2021 ¹³	Combined	–	–	39	64	–

^aProposed by the International System for Reporting Serous Fluid Cytopathology, from Farahani *et al.* 2019. *There is only one study in this group. AUS, atypia of uncertain significance; MAL, malignant; ND, nondiagnostic; NFM, negative for malignancy; SFM, suspicious of malignancy.

- metastatic urothelial carcinomas. *Am J Surg Pathol* 2013;37(12):1876–1881. doi:10.1097/PAS.0b013e31829e2525, PMID:24121175.
- [29] Ai D, Yao J, Yang F, Huo L, Chen H, Lu W, *et al.* TRPS1: a highly sensitive and specific marker for breast carcinoma, especially for triple-negative breast cancer. *Mod Pathol* 2021;34(4):710–719. doi:10.1038/s41379-020-00692-8, PMID:33011748.
- [30] Yoon EC, Wang G, Parkinson B, Huo L, Peng Y, Wang J, *et al.* TRPS1, GATA3, and SOX10 expression in triple-negative breast carcinoma. *Hum Pathol* 2022;125:97–107. doi:10.1016/j.humpath.2022.04.006, PMID:35413381.
- [31] Wang M, Stendahl K, Cai G, Adeniran A, Harigopal M, Gilani SM. Evaluation of TRPS1 Expression in Pleural Effusion Cytology Specimens With Metastatic Breast Carcinoma. *Am J Clin Pathol* 2022;158(3):416–425. doi:10.1093/ajcp/qaac066, PMID:35760555.
- [32] Wang M, Abi-Raad R, Adeniran AJ, Cai G. Expression of NKX3.1, Prostatic Specific Antigen and Prostatic Specific Alkaline Phosphatase in Cytology Specimens of Metastatic Prostatic Carcinoma. *J Clin Transl Pathol* 2021;1(1):16–20. PMID:35265947.
- [33] Husain AN, Colby TV, Ordóñez NG, Krausz T, Borczuk A, Cagle PT, *et al.* Guidelines for pathologic diagnosis of malignant mesothelioma: a consensus statement from the International Mesothelioma Interest Group. *Arch Pathol Lab Med* 2009;133(8):1317–1331. doi:10.5858/133.8.1317, PMID:19653732.
- [34] Husain AN, Colby TV, Ordóñez NG, Allen TC, Attanoos RL, Beasley MB, *et al.* Guidelines for Pathologic Diagnosis of Malignant Mesothelioma 2017 Update of the Consensus Statement From the International Mesothelioma Interest Group. *Arch Pathol Lab Med* 2018;142(1):89–108. doi:10.5858/arpa.2017-0124-RA, PMID:28686500.
- [35] Michael CW. The cytologic diagnosis of mesothelioma: are we there yet? *J Am Soc Cytopathol* 2023;12(2):89–104. doi:10.1016/j.jasc.2022.12.001, PMID:36702736.
- [36] Pedio G, Landolt-Weber U. Cytologic presentation of malignant mesothelioma in pleural effusions. *Exp Cell Biol* 1988;56(4):211–216. doi:10.1159/000163482, PMID:3203820.
- [37] Hjerpe A, Abd-Own S, Dobra K. Cytopathologic Diagnosis of Epithelioid and Mixed-Type Malignant Mesothelioma: Ten Years of Clinical Experience in Relation to International Guidelines. *Arch Pathol Lab Med* 2018;142(8):893–901. doi:10.5858/arpa.2018-0020-RA, PMID:30040460.
- [38] Segal A, Sterrett GF, Frost FA, Shilkin KB, Olsen NJ, Musk AW, *et al.* A diagnosis of malignant pleural mesothelioma can be made by effusion cytology: results of a 20 year audit. *Pathology* 2013;45(1):44–48. doi:10.1097/PAT.0b013e32835bc848, PMID:2322247.
- [39] Hjerpe A, Ascoli V, Bedrossian CW, Boon ME, Creaney J, Davidson B, *et al.* Guidelines for the Cytopathologic Diagnosis of Epithelioid and Mixed-Type Malignant Mesothelioma: a secondary publication. *Cytopathology* 2015;26(3):142–156. doi:10.1111/cyt.12250, PMID:26052757.

- [40] Michael CW. Serous fluid cytopathology: Past, present, and future. *Diagn Cytopathol* 2021;49(5):577–581. doi:10.1002/dc.24663, PMID:33634959.
- [41] Attanoos RL, Griffin A, Gibbs AR. The use of immunohistochemistry in distinguishing reactive from neoplastic mesothelium. A novel use for desmin and comparative evaluation with epithelial membrane antigen, p53, platelet-derived growth factor-receptor, P-glycoprotein and Bcl-2. *Histopathology* 2003;43(3):231–238. doi:10.1046/j.1365-2559.2003.01686.x, PMID:12940775.
- [42] Saad RS, Cho P, Liu YL, Silverman JF. The value of epithelial membrane antigen expression in separating benign mesothelial proliferation from malignant mesothelioma: a comparative study. *Diagn Cytopathol* 2005;32(3):156–159. doi:10.1002/dc.20208, PMID:15690334.
- [43] Ikeda K, Tate G, Suzuki T, Kitamura T, Mitsuya T. Diagnostic usefulness of EMA, IMP3, and GLUT-1 for the immunocytochemical distinction of malignant cells from reactive mesothelial cells in effusion cytology using cytopspin preparations. *Diagn Cytopathol* 2011;39(6):395–401. doi:10.1002/dc.21398, PMID:21574259.
- [44] Shen J, Pinkus GS, Deshpande V, Cibas ES. Usefulness of EMA, GLUT-1, and XIAP for the cytologic diagnosis of malignant mesothelioma in body cavity fluids. *Am J Clin Pathol* 2009;131(4):516–523. doi:10.1309/ajcpwfw7o1fvfikt, PMID:19289587.
- [45] Marjon K, Cameron MJ, Quang P, Clasquin MF, Mandley E, Kunii K, *et al*. MTAP Deletions in Cancer Create Vulnerability to Targeting of the MAT2A/PRMT5/RIOK1 Axis. *Cell Rep* 2016;15(3):574–587. doi:10.1016/j.celrep.2016.03.043, PMID:27068473.
- [46] Churg A, Naso JR. The Separation of Benign and Malignant Mesothelial Proliferations: New Markers and How to Use Them. *Am J Surg Pathol* 2020;44(11):e100–e112. doi:10.1097/pas.0000000000001565, PMID:32826526.
- [47] Cigognetti M, Lonardi S, Fisogni S, Balzarini P, Pellegrini V, Tironi A, *et al*. BAP1 (BRCA1-associated protein 1) is a highly specific marker for differentiating mesothelioma from reactive mesothelial proliferations. *Mod Pathol* 2015;28(8):1043–1057. doi:10.1038/modpathol.2015.65, PMID:26022455.
- [48] Chandra A. The Brescia panel and The International System for Reporting Serous Fluid Cytopathology. *Cancer Cytopathol* 2021;129(4):262–263. doi:10.1002/cncy.22369, PMID:33045142.
- [49] Patel T, Patel P, Mehta S, Shah M, Jetly D, Khanna N. The value of cytology in diagnosis of serous effusions in malignant lymphomas: An experience of a tertiary care center. *Diagn Cytopathol* 2019;47(8):776–782. doi:10.1002/dc.24197, PMID:31091023.
- [50] Das DK, Al-Juwaiser A, George SS, Francis IM, Sathar SS, Sheikh ZA, *et al*. Cytomorphological and immunocytochemical study of non-Hodgkin's lymphoma in pleural effusion and ascitic fluid. *Cytopathology* 2007;18(3):157–167. doi:10.1111/j.1365-2303.2007.00448.x, PMID:17488258.
- [51] Johnston WW. The malignant pleural effusion. A review of cytopathologic diagnoses of 584 specimens from 472 consecutive patients. *Cancer* 1985;56(4):905–909. doi:10.1002/1097-0142(19850815)56:4<905::aid-cnrcr2820560435>3.0.co;2-u, PMID:4016683.
- [52] Savvidou K, Dimitrakopoulou A, Kafasi N, Konstantopoulos K, Vassilakopoulos T, Angelopoulou M, *et al*. Diagnostic role of cytology in serous effusions of patients with hematologic malignancies. *Diagn Cytopathol* 2019;47(5):404–411. doi:10.1002/dc.24110, PMID:30417978.
- [53] Tong LC, Ko HM, Saieg MA, Boerner S, Geddie WR, da Cunha Santos G. Subclassification of lymphoproliferative disorders in serous effusions: a 10-year experience. *Cancer Cytopathol* 2013;121(5):261–270. doi:10.1002/cncy.21257, PMID:23460311.
- [54] Malik I, Abubakar S, Rizwana I, Alam F, Rizvi J, Khan A. Clinical features and management of malignant ascites. *J Pak Med Assoc* 1991;41(2):38–40. PMID:1902531.
- [55] Valdés L, Alvarez D, Valle JM, Pose A, San José E. The etiology of pleural effusions in an area with high incidence of tuberculosis. *Chest* 1996;109(1):158–162. doi:10.1378/chest.109.1.158, PMID:8549179.
- [56] Jha S, Sethy M, Adhya AK. Application of the International System for Reporting Serous Fluid Cytopathology in routine reporting of pleural effusion and assessment of the risk of malignancy. *Diagn Cytopathol* 2021;49(10):1089–1098. doi:10.1002/dc.24837, PMID:34289263.
- [57] Olson PR, Silverman JF, Powers CN. Pleural fluid cytology of Hodgkin's disease: cytomorphologic features and the value of immunohistochemical studies. *Diagn Cytopathol* 2000;22(1):21–24. doi:10.1002/(sici)1097-0339(200001)22:1<21::aid-dc6>3.0.co;2-s, PMID:10613967.
- [58] Das DK. Serous effusions in malignant lymphomas: a review. *Diagn Cytopathol* 2006;34(5):335–347. doi:10.1002/dc.20432, PMID:16604559.
- [59] Boone E, Verhaaf B, Langerak AW. PCR-based analysis of rearranged immunoglobulin or T-cell receptor genes by GeneScan analysis or heteroduplex analysis for clonality assessment in lymphoma diagnostics. *Methods Mol Biol* 2013;971:65–91. doi:10.1007/978-1-62703-269-8_4, PMID:23296958.
- [60] Zeppa P, Sosa Fernandez LV, Cozzolino I, Ronga V, Genesio R, Salatiello M, *et al*. Immunoglobulin heavy-chain fluorescence in situ hybridization-chromogenic in situ hybridization DNA probe split signal in the clonality assessment of lymphoproliferative processes on cytological samples. *Cancer Cytopathol* 2012;120(6):390–400. doi:10.1002/cncy.21203, PMID:22517675.
- [61] Board WCoTE. WHO Classification of Tumours Editorial Board. *Haematolymphoid tumours*. 5 ed. Lyon (France): International Agency for Research on Cancer; 2022.
- [62] Pinto D, Chandra A, Schmitt F. The International System for Reporting Serous Fluid Cytopathology: How to Incorporate Molecular Data in Cytopathology Reports. *Journal of Molecular Pathology* 2021;2:66–76. doi:10.3390/jmp2020007.
- [63] Davidson B. Molecular testing on serous effusions. *Diagn Cytopathol* 2021;49(5):640–646. doi:10.1002/dc.24392, PMID:32023012.
- [64] Husain H, Nykin D, Bui N, Quan D, Gomez G, Woodward B, *et al*. Cell-Free DNA from Ascites and Pleural Effusions: Molecular Insights into Genomic Aberrations and Disease Biology. *Mol Cancer Ther* 2017;16(5):948–955. doi:10.1158/1535-7163.Mct-16-0436, PMID:28468865.
- [65] Pinto D, Cruz E, Branco D, Linares C, Carvalho C, Silva A, *et al*. Cytohistological Correlation in Pleural Effusions Based on the International System for Reporting Serous Fluid Cytopathology. *Diagnostics (Basel)* 2021;11(6):1126. doi:10.3390/diagnostics11061126, PMID:34203073.
- [66] Jha S, Mitra S, Purkait S, Adhya AK. The Milan System for Reporting Salivary Gland Cytopathology: Assessment of Cytohistological Concordance and Risk of Malignancy. *Acta Cytol* 2021;65(1):27–39. doi:10.1159/000510720, PMID:33045705.
- [67] Sun T, Wang M, Wang H. Risk of malignancy assessment of the International System for Reporting Serous Fluid Cytopathology: Experience in a community hospital setting and comparison with other studies. *Cancer Cytopathol* 2022;130(12):964–973. doi:10.1002/cncy.22638, PMID:35994357.
- [68] Lobo C, Costa J, Petronilho S, Monteiro P, Leça L, Schmitt F. Cytohistological correlation in serous effusions using the newly proposed International System for Reporting Serous Fluid Cytopathology: Experience of an oncological center. *Diagn Cytopathol* 2021;49(5):596–605. doi:10.1002/dc.24440, PMID:32339444.
- [69] Pergaris A, Stefanou D, Keramari P, Sousouris S, Kavantzias N, Gogas H, *et al*. Application of the International System for Reporting Serous Fluid Cytopathology with Cytohistological Correlation and Risk of Malignancy Assessment. *Diagnostics (Basel)* 2021;11(12):2223. doi:10.3390/diagnostics11122223, PMID:34943460.
- [70] Xu Y, Hu AY, Wang SM, Wang Q, Pan YC, Zhang SH. A retrospective analysis of pleural effusion specimens based on the newly proposed International System for Reporting Serous Fluid Cytopathology. *Diagn Cytopathol* 2021;49(9):997–1007. doi:10.1002/dc.24804, PMID:34019334.
- [71] Ahuja S, Malviya A. Categorisation of serous effusions using the International System for Reporting Serous Fluid Cytopathology and assessment of risk of malignancy with diagnostic accuracy. *Cytopathology* 2022;33(2):176–184. doi:10.1111/cyt.13089, PMID:34913541.
- [72] Bharti S, Nalwa A, Elhence PA, Rao M, Bharti JN, Khera S, *et al*. Risk Stratification of Pleural Fluid Cytology Based on the International System for Reporting Serous Fluid Cytology in a Tertiary Care Centre. *Acta Cytol* 2022;66(5):449–456. doi:10.1159/000524144, PMID:35413720.
- [73] Straccia P, Chiappetta M, Magnini D, Cellierieri A. Application of the International System for Reporting Serous Fluid Cytopathology (TIS): A retrospective institutional study. *Cytopathology* 2022;33(3):305–311. doi:10.1111/cyt.13113, PMID:35213747.
- [74] Rakheja G, Singh M, Priyadarshnee B, Marimuthu B, Dhar L, Jain S, *et al*. Categorisation of peritoneal serous effusions using the International System for Reporting Serous Fluid Cytopathology-A study on gynaecological samples. *Cytopathology* 2023;34(2):138–145. doi:10.1111/cyt.13201, PMID:36530023.
- [75] Li JJX, Cheung W, Ng JKM, Tse GM. Application of algorithmic cytomorphological assessment and immunocytochemistry with the international system for reporting serous fluid cytopathology on pericardial fluid cytology. *J Clin Pathol* 2023. doi:10.1136/jcp-2023-209078, PMID:37643837.
- [76] Song MJ, Jo U, Jeong JS, Cho KJ, Gong G, Cho YM, *et al*. Clinico-cytopathologic analysis of 574 Pericardial Effusion Specimens: Application of the international system for reporting serous fluid cytopathology (ISRSFC) and long-term clinical follow-up. *Cancer Med* 2021;10(24):8899–8908. doi:10.1002/cam4.4408, PMID:34747147.
- [77] Kolte S, Zaaheer S, Aden D, Ranga S. Application of the international system for reporting serous fluid cytopathology on reporting various body fluids; experience of a tertiary care hospital. *Cytojournal* 2022;19:52. doi:10.25259/Cytojournal_49_2021, PMID:36128470.
- [78] Mikou P, Pergaris A, Engels M, Chandra A. Review of the impact of the International System for Serous Fluid Cytopathology. *Cytopathology* 2024;35(1):16–22. doi:10.1111/cyt.13313, PMID:37795809.
- [79] VandenBussche CJ, Crothers B, Chandra A, Schmitt F, Kurtycz DFI. The international system for reporting serous fluid cytopathology: The initial project survey. *Cytopathology* 2023;34(3):191–197. doi:10.1111/cyt.13218, PMID:36752688.