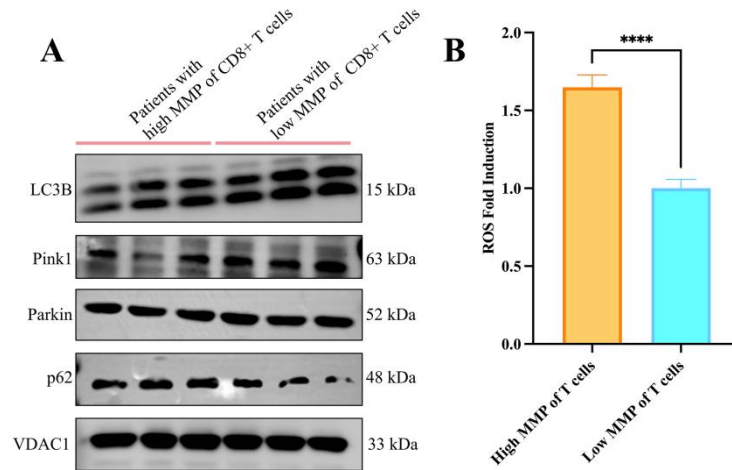


3.10 Supplementary Figure 10: Changes in the mitochondrial membrane potential of CD8+ T cells could be partially explained by mitochondria damage and abnormally activated mitochondrial autophagy.



A. the expression of mitochondrial autophagy-related proteins; **B.** the intracellular ROS content in CD3+ T cells.

LC3: autophagy-related 8a; PINK1: PTEN-induced putative kinase 1; Parkin: Parkin coregulated gene protein; p62: ubiquitin binding scaffold protein; VDAC1: voltage-dependent anion-selective channel protein 1; ROS: reactive oxygen species.