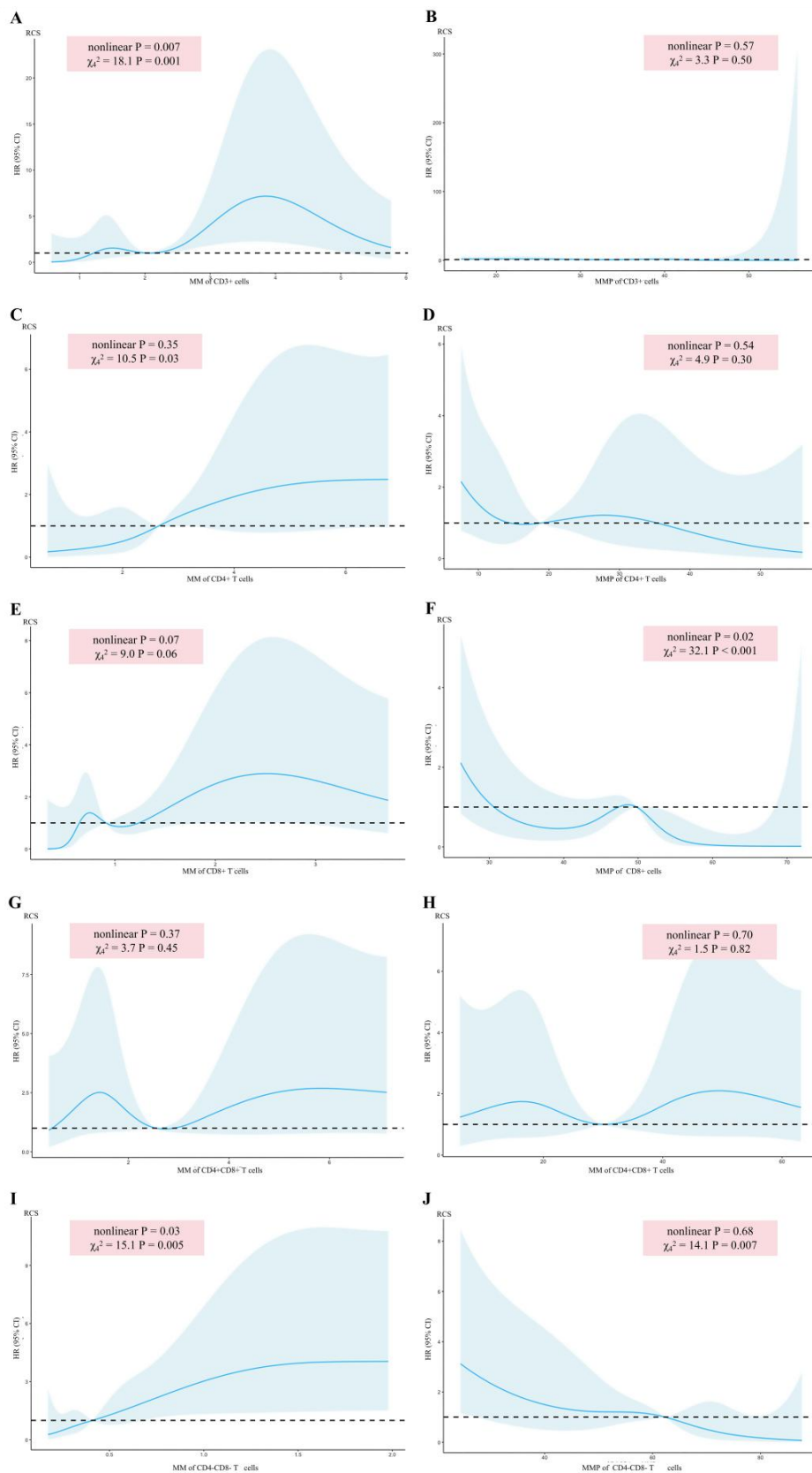


**3.6 Supplementary Figure 6: RCS to predict the relationship between the MM or the MMP of T cells and the risk of ACLF within 90 days.**



**A.** RCS to predict the relationship between the MM of CD3+ cells and the risk of ACLF within 90 days. **B.** RCS to predict the relationship between the MMP of CD3+ cells and the risk of ACLF within 90 days. **C.** RCS to predict the relationship between the MM of CD4+ T cells and the risk of ACLF within 90 days. **D.** RCS to predict the relationship between the MMP of CD4+ T cells and the risk of ACLF within 90 days. **E.** RCS to predict the relationship between the MM of CD8+ T cells and the risk of ACLF within 90 days. **F.** RCS to predict the relationship between the MMP of CD8+ T cells and the risk of ACLF within 90 days. **G.** RCS to predict the relationship between the MM of CD4+CD8+ T cells and the risk of ACLF within 90 days. **H.** RCS to predict the relationship between the MMP of CD4+CD8+ T cells and the risk of ACLF within 90 days. **I.** RCS to predict the relationship between the MM of CD4-CD8- T cells and the risk of ACLF within 90 days. **J.** RCS to predict the relationship between the MMP of CD4-CD8- T cells and the risk of ACLF within 90 days.

RCS: restricted cubic spline; MM: mitochondrial mass; MMP: mitochondrial membrane potential.