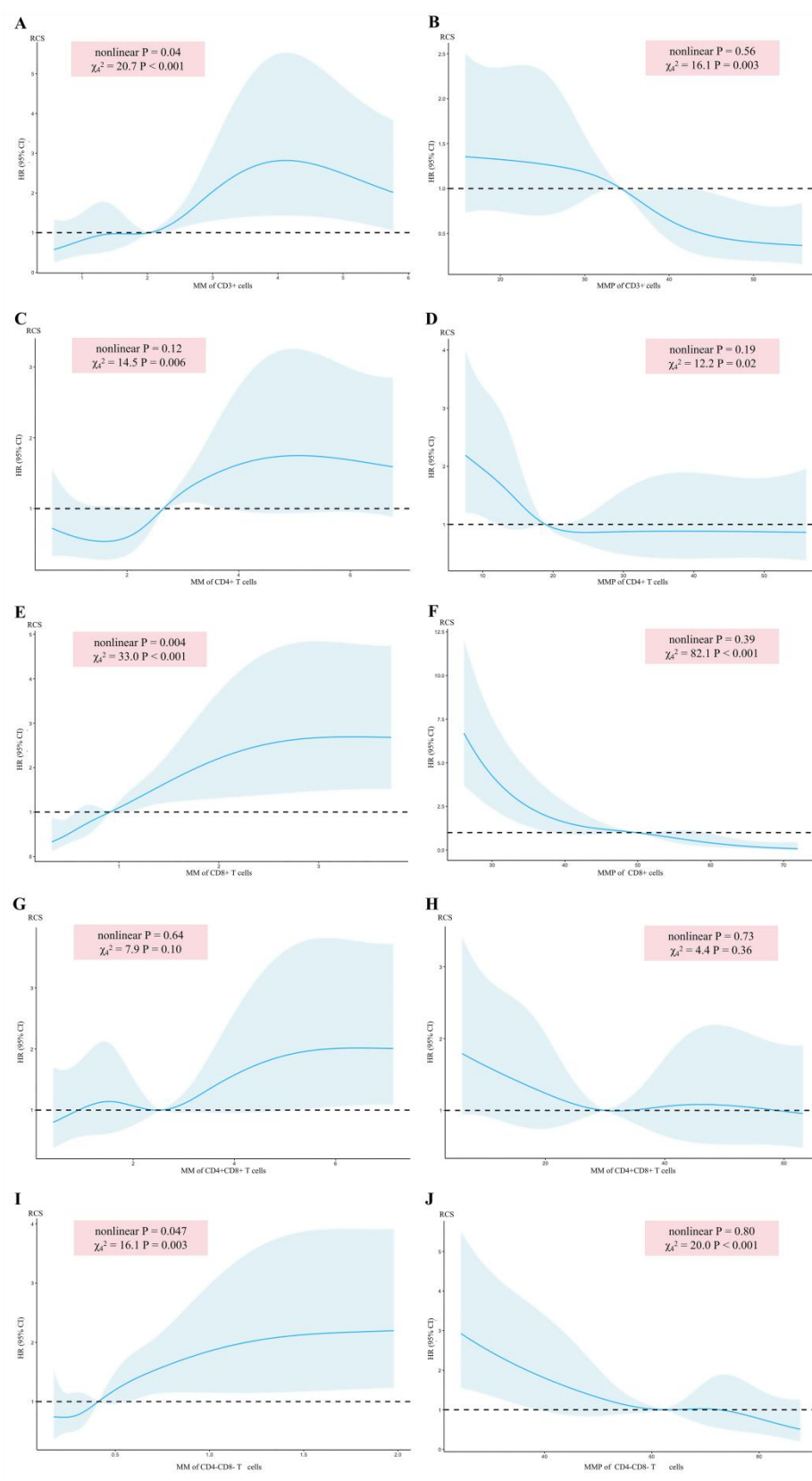


3.5 Supplementary Figure 5: RCS curves of the relationship between the MM or the MMP of T cells and the risk of BI within 90 days.



A. RCS of the relationship between the MM of CD3⁺ T cells and the risk of BI within 90 days; **B.** RCS of the relationship between the MMP of CD3⁺ T cells and the risk of BI within 90 days; **C.** RCS of the relationship between the MM of CD4⁺ T cells and the risk of BI within 90 days; **D.** RCS of the relationship between the MMP of CD4⁺ T cells and the risk of BI within 90 days; **E.** RCS of the relationship between the MM of CD8⁺ T cells and the risk of BI within 90 days; **F.** RCS of the relationship between the MMP of CD8⁺ T cells and the risk of BI within 90 days; **G.** RCS of the relationship between the MM of CD4⁺CD8⁺ T cells and the risk of BI within 90 days; **H.** RCS of the relationship between the MMP of CD4⁺CD8⁺ T cells and the risk of BI within 90 days; **I.** RCS of the relationship between the MM of CD4⁻CD8⁻ T cells and the risk of BI within 90 days; **J.** RCS of the relationship between the MMP of CD4⁻CD8⁻ T cells and the

RCS: restricted cubic spline; HR: hazard ratio; MM: mitochondrial mass; MMP: mitochondrial membrane potential.