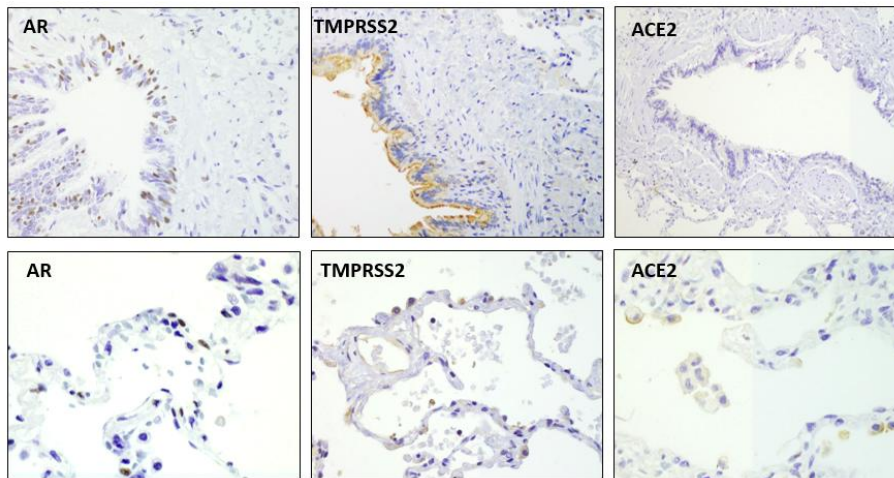
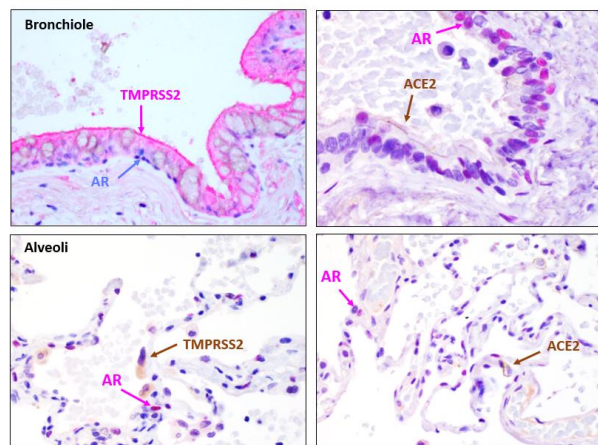


Supplementary Figure 2.

a



b



c

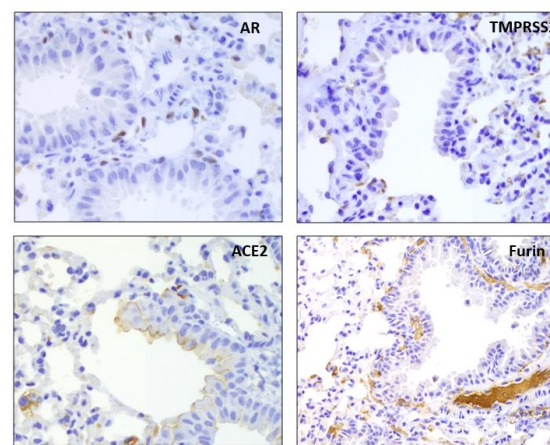


Figure 2. AR expression in adult male human and murine lungs. (a) Representative images of normal male human lungs stained for AR, TMPRSS2, and ACE2. Top panel: bronchiole; Bottom panel: alveoli (200X magnification). (b) Representative images of human lungs stained using dual IHC: Left upper: co-expression of AR (blue) and TMPRSS2 (red) in bronchial epithelium; Right upper: rare co-expression of AR (red) and ACE2 (brown) in bronchial epithelium; Left bottom: AR (red) and TMPRSS2 (brown) detected in different cells in alveolar tissue; Right bottom: AR (red) and ACE2 (brown) detected in different cells in alveolar tissue (200X magnification). (c) Representative images of murine lungs stained for AR, TMPRSS2, ACE2 and Furin (400X magnification).